



Pacific Partnership 2016 Confirmation Brief

**COMDESRON 23
01 April
San Diego, California**



Agenda

- ***Mission and Priorities***
- ***Commander's Intent and End State***
- ***Scheme of Maneuver***
- ***Command and Control***
- ***CONOPS/Element Readiness Report***
 - ***Timor-Leste (TLS)***
 - ***Philippines (PHL)***
 - ***Vietnam (VNM)***
 - ***Malaysia (MYS)***
 - ***Indonesia (IDN)***
 - ***Palau (PLW)***
- ***Approval Recommendation***



Mission and Priorities

- **The Mission**

On order, COMPACFLT, in cooperation with Allies, Partners, USPACOM service components, and Interagency, conducts combined and joint all hazards operations in Asia Pacific in order to build internal capability and resiliency to the effects of all hazards events; enhance regional interoperability and response capabilities; build and strengthen alliances, partnerships, and relationships, and communicate U.S. commitment and resolve to the security and stability of the region.

- **The Priorities**

- **Train JTF staff in FDR environment procedures**
- **Forging relationships with key multinational partners**
- **Enhancing readiness through the exercise of mission command, interagency coordination and validation**
- **Train multi-component civilian and military agencies and effectively demonstrate/communicate the full range of capabilities given limited logistics of an actual disaster relief operation**



Commander's Intent

- **Purpose:** Strengthen relationships and promote mutual security interests in Asia Pacific while developing and enhancing the capabilities and interoperability of participating Allies and Partners.
- **Method:** PP16 will be conducted in three phases.
 - **Phase 1: SHAPE THE ENVIRONMENT**
 - Conduct planning for PP16
 - Coordinate and plan with HHQ, Partner Nations, Interagency, Host Nations, and Humanitarian Community
 - Conduct Bi-Lateral Concept Development Conferences, Site Surveys, and Advance Party Coordination with Host Nations
 - **Phase 2: CONDUCT COMBINED CIVIL-MILITARY (CMO) OPS**
 - Execute activities planned during Phase 1
 - Support HN in the execution of CMO activities
 - Conduct PA and IO in support of strategic communication objectives
 - **Phase 3: TRANSITION, REDEPLOY, AND ASSESS**
 - Transfer residual assets/resources to legal and competent authority such as USAID
 - Redeploy units and personnel
 - Return personnel, material, and equipment to conditions of readiness determined by force providers
 - Conduct Post-Mission Assessment



End State

End State

- US, Allies and Partner relationships strengthened
- Partner interoperability is advanced
- Partner capability and resiliency to the effects of all hazards events is improved
- Regional response capability is enhanced
- Resolve and commitment to the security and stability of the region is demonstrated by U.S., Allies and Partners

Objectives

1: Advance U.S., Allies, Partners, Interagency, and Host Nation priorities in TLS, PHL, VNM, MYS, and IDN.

1.1: Interoperability during mission planning phases demonstrated

1.2: Interoperability during mission execution phases demonstrated

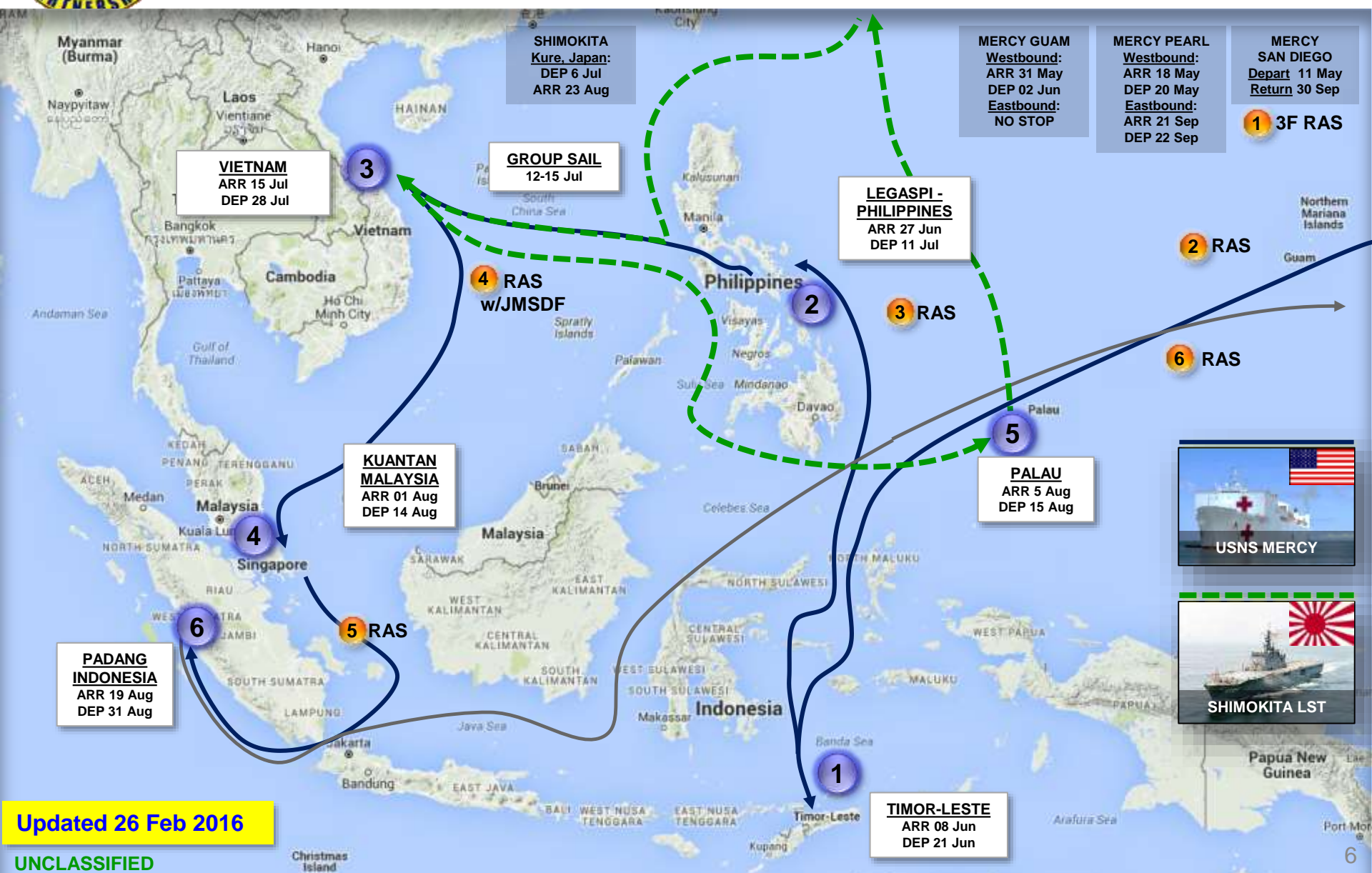
2: Partners and interagency capability to prepare for and respond to all hazards events enhanced.

2.1: All hazards risk reduction capability enhanced (preparedness and mitigation)

2.2: All hazard response capability enhanced (response focused)

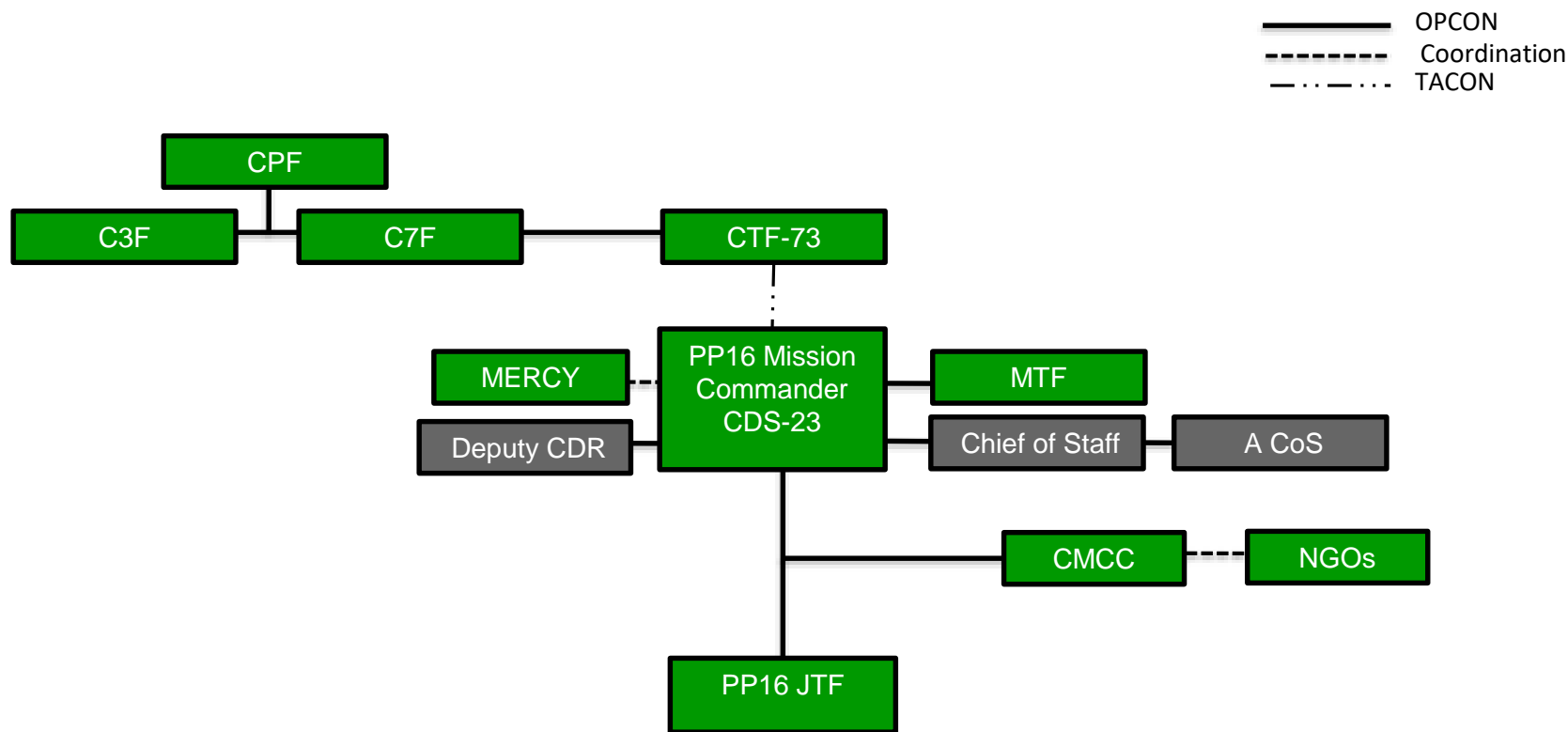


Scheme of Maneuver



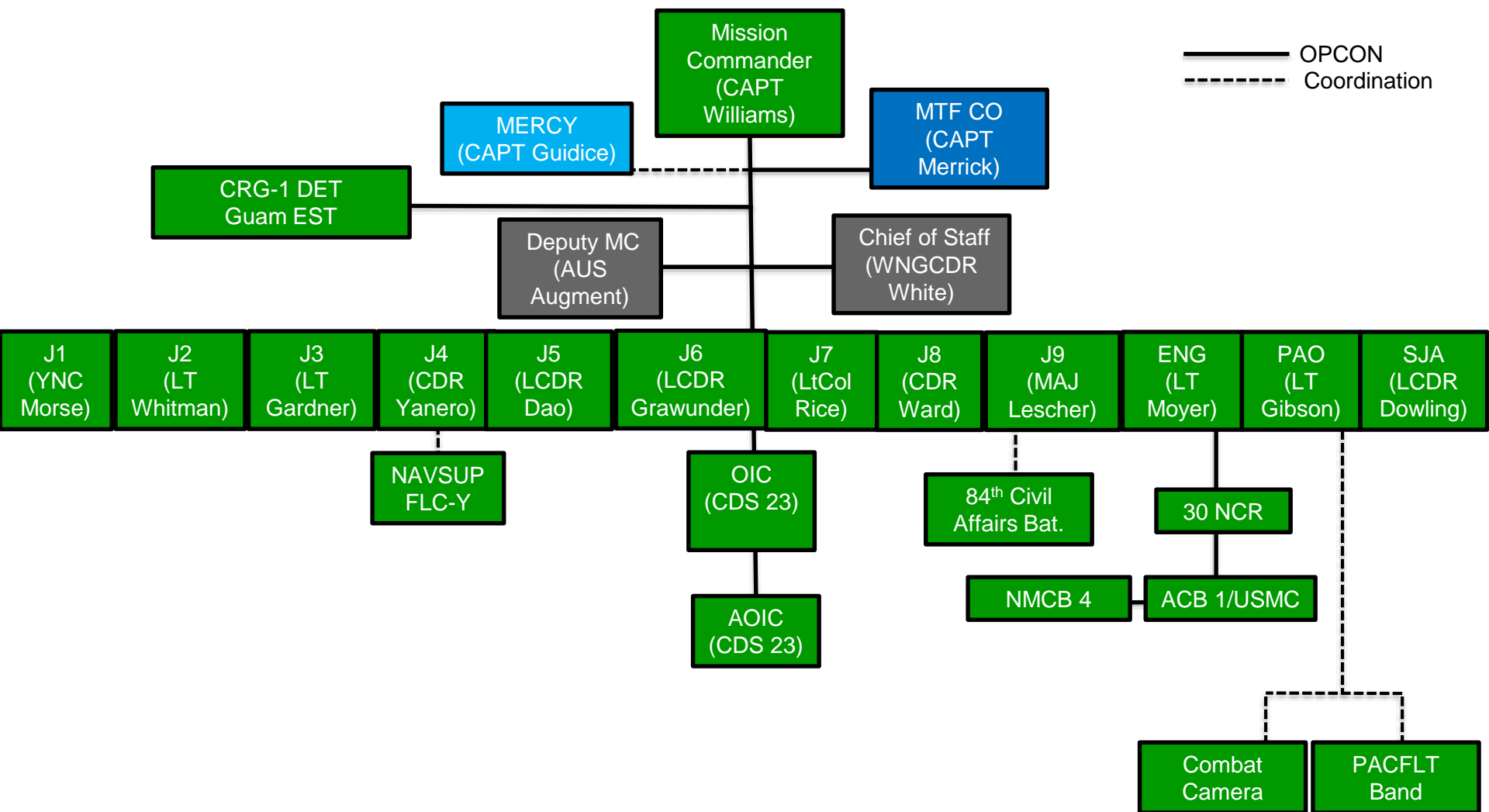


Command and Control





MC Staff Organization





Timor-Leste CONOPS

LCDR Dao (OIC)
LTJG Hardie (AOIC)



Agenda

- ***Orientation Map***
- ***Schedule***
- ***Line of Effort Overview***
- ***ENCAP/SMEE Projects***
- ***Medical SMEE/CHE Projects***
- ***HA/DR Event***
- ***COMREL***
- ***WPS Overview***
- ***HLZ Sites***
- ***ORM: Risk to Force***
- ***ORM: Risk to Mission***
- ***TLS Element Readiness Report***

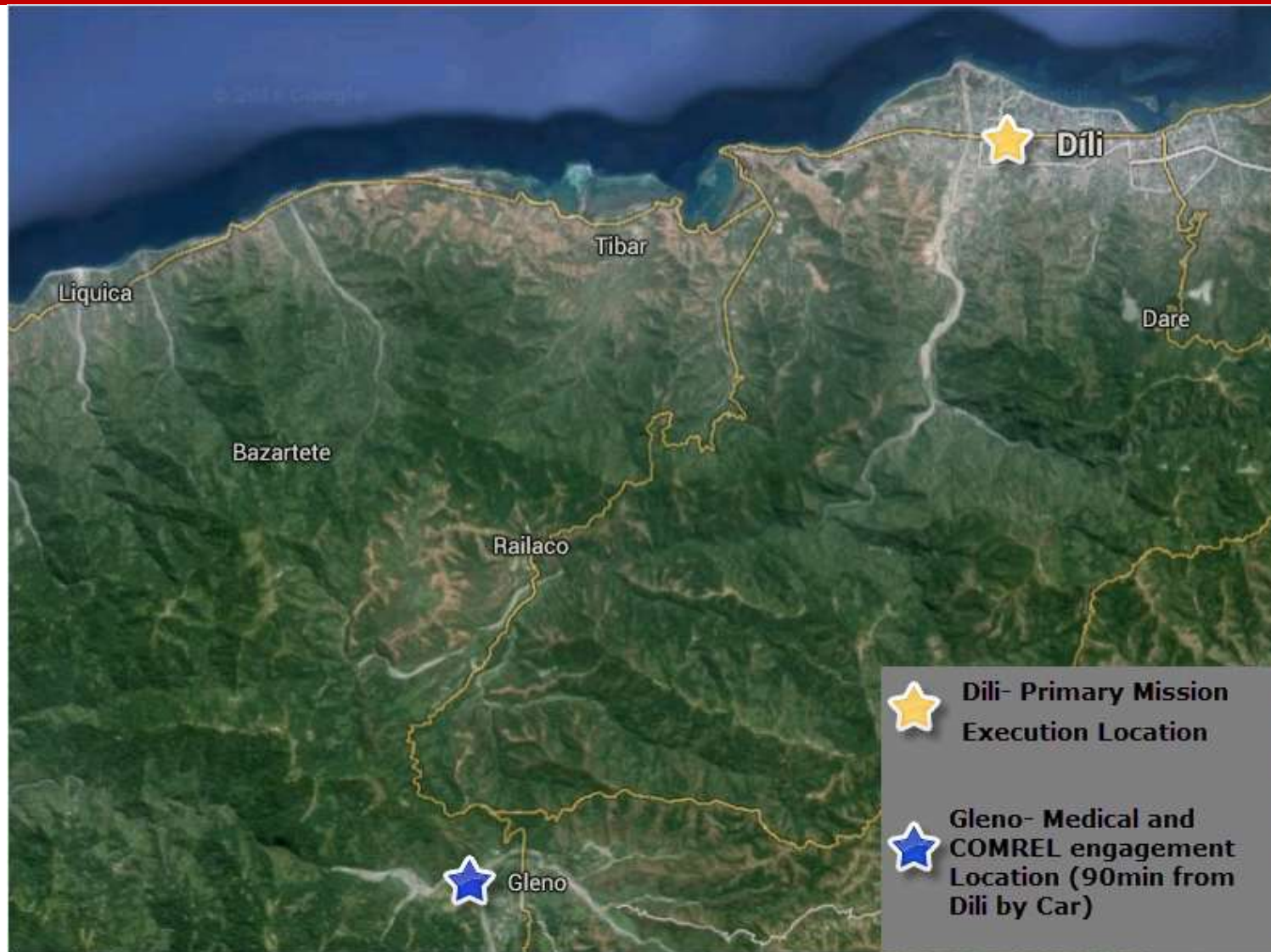


Update from MPC

- **Translator Services:** Requirements sent for contracting
- **Translation Materials:** 70% uploaded to APAN
 - **Outstanding items:** ENG SMEE, HADR briefs (WPS & JPN), remaining MED SMEE Briefs. Due date 15APR.
- **Integration of Singaporean medical team (13 PAX, fly-in contingent 10-17Jul)**
- **ENG SMEE location- DNEPCC confirmed**
- **Joint Band Engagement with 5 F-FDTL band members**
- **MERCY Shipboard SMEE (4 from F-FDTL and 4 from MOH)- 4 F-FDTL confirmed, pending confirmation of 4 MOH**
- **HA/DR Symposium request for lunch denied**



Orientation Map





TLS Schedule

EX PACIFIC PARTNERSHIP-16 SYNOPSIS OF EVENTS FROM 08-21 JUN 16

LOE	WED 08 JUN	THUR 09 JUN	FRI 10 JUN	SAT 11 JUN	SUN 12 JUN	MON 13 JUN	TUES 14 JUN	WED 15 JUN	THUR 16 JUN	FRI 17 JUN	SAT 18 JUN	SUN 19 JUN	MON 20 JUN	TUE 21 JUN
USNS MERCY	MERCY ARRIVES: 0900L	AT ANCHOR- DILI HARBOR												MERCY DEPARTS: 0900L
HIGH PROFILE EVENTS	OPENING CEREMONY: F-FDTL HQ				ADMIN DAY	HA/DR Symposium Kick-off F-FDTL HQ						ADMIN DAY	CLOSING CEREMONY AND RIBBON CUTTING Maneluana School	
HA/DR		DILI SETUP	DILI SETUP			DILI WORKSHOP	DILI WORKSHOP	DILI WORKSHOP	DILI TTX	DILI TTX				
MED SMEE		DILI	DILI	DILI		DILI	DILI	DILI	DILI	DILI	DILI			
MED CHE	Set up	GLENO	GLENO	GLENO		GLENO	GLENO	GLENO	GLENO	GLENO	GLENO		Breakdown	
Shipboard Med SMEE		MERCY	MERCY			MERCY	MERCY	MERCY	MERCY	MERCY				
ENG SMEE	Set up					DILI	DILI	DILI	DILI	DILI				
ENGCAP	DILI Maneluana School	DILI Maneluana School	DILI Maneluana School	DILI Maneluana School		DILI Maneluana School	DILI Maneluana School	DILI Maneluana School	DILI Maneluana School	DILI Maneluana School	DILI Maneluana School			
COMMUNITY RELATIONS/ MEDIA		CONCERT: Timor-Plaza Shopping Center		CONCERT Christo Rei		Small concert, soccer and arts/crafts event at Dili Futbol Field	Beach Cleanup	CONCERT: UNTL		CONCERT: Largo de Lecidres Park				
WOMEN, PEACE & SECURITY						DILI	DILI	DILI	DILI	DILI				



Timor-Leste Lines of Effort

- Engineering: Engineering Civic Action Program (ENCAP) and Subject Matter Expert Exchanges (SMEE)
- Medical: Cooperative Health Engagement (CHE), Subject Matter Expert Exchanges (SMEE) and Shipboard SMEE
- HA/DR Workshop: 5 day symposium with all relevant Civilian and Military representatives
- COMREL: Band engagements and community outreach
- WPS: Women, Peace and Security



ENCAP

E.B.C. Manleuana Primary School

DESCRIPTION: The Manleuana School is responsible for the education of 1,814 students. Three of the buildings were constructed during the Indonesian-era in 1982 and are in need of replacement. One building is in extremely poor condition following damage sustained during an earthquake that occurred in June 2015. This school is in use despite the significant risk to health/safety of the children. This project will greatly benefit the students and staff at this school. The construction will also provide an outstanding training and interoperability opportunity.

LOCATION: Dili Timor Leste (Lat/Long: S08° 34.436' / E125° 32.567' / MGRS: 51L YL 79897 51327)

PAX: 36 Engineers

DURATION: 60 Days

SCOPE OF WORK: Demolition of existing 3-classroom schoolhouse to include the concrete foundation. Construct a new 3-classroom schoolhouse. New work to include: concrete foundation, CMU walls, corrugated metal roof, louvered-glass windows, wood doors, chalkboards, stucco-finish, and paint to match MOE color-scheme.





Engineer SMEE

What: 5 day Engineering Symposium with morning and afternoon sessions to provide training and build working relationships with host nation.

Who: 40 participants. Local, regional, and national government officials, military, non-governmental and private sector engineers, planners, contractors, and academia (faculty and students).

Where: DNEPCC

When: Two sessions, daily from 13-17 Jun 2016

Why: Facilitate HA/DR training, international professional engineering exchange, and increase societal disaster resilience.

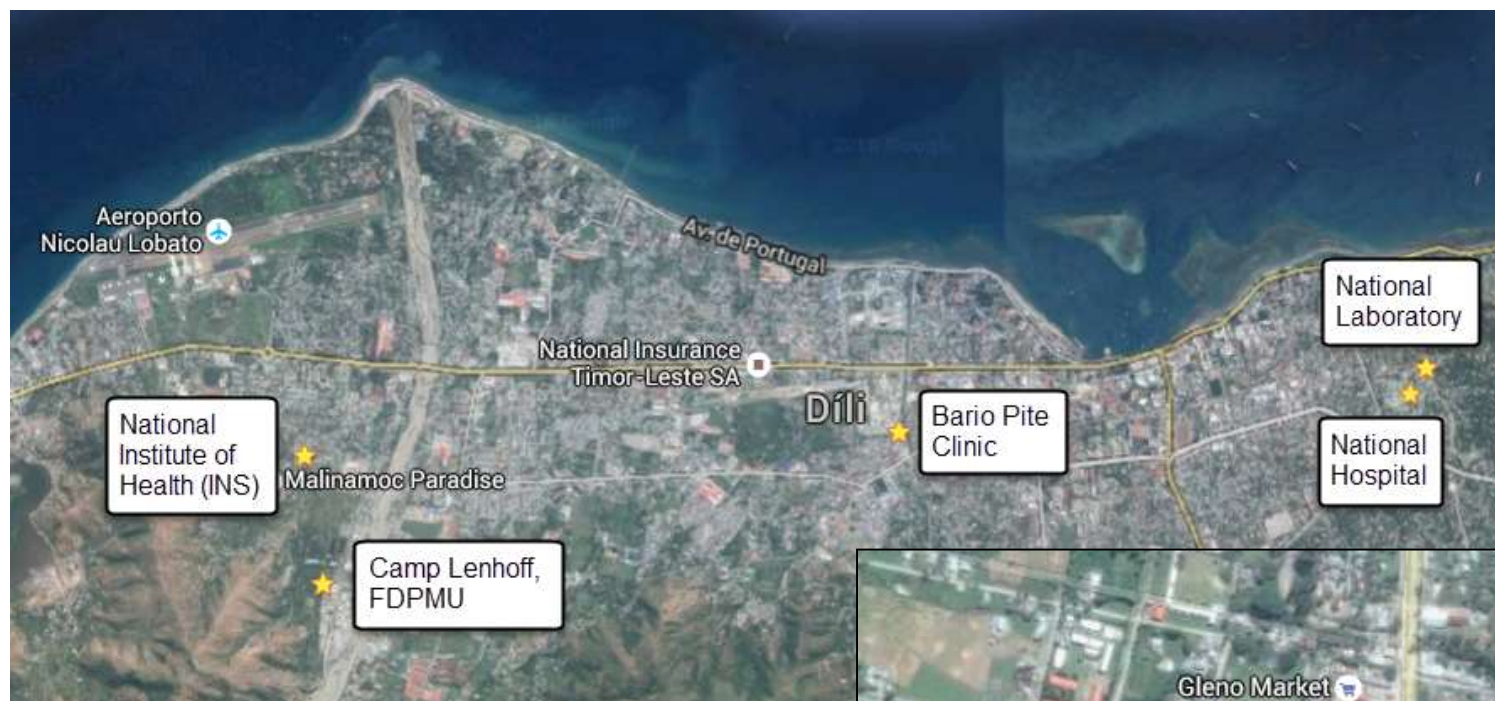
TOPICS:

- Coastal protection and erosion control
- Flood Mitigation control
- Slope management/stabilization
- Post Event Building Damage Assessments





Medical Sites





Medical CHE Site

DESCRIPTION: Proposed site for cooperative health engagement and subject matter expert exchanges. There are two clinical buildings that can be used for CHE stations. Two open areas that can be used for patient admission and health education station; Two schools nearby (5 minutes) which are potential sites for health education engagement.

LOCATION: Gleno, Ermera, Timor-Leste (Lat: -8.725441, Long: 125.436705) (transit time to Port Dili 90 minutes)

PAX: ~66

DURATION: 9 Days

SCOPE OF WORK: Antenatal Care, BMET, Child Health Outreach, Dental, Emergency Dept. SMEE, Helping Babies Breath, Infection Control, Internal Medicine SMEE, Mental Health, Nursing, Nutrition, Obstetrics, Optometry, Pediatrics, Postnatal Care

LIFE SUPPORT: Transportation, A/V equipment for SMEEs, tents, power supply, chairs/tables for health education station, food and water for staff and participants, portable toilets/sanitation stations for patients and staff, and medical supplies

ATFP: Fenced perimeter. Single point of entry. Well lit building. No human guard. Locked doors on some rooms.





Medical SMEE Sites

DESCRIPTION: Large inpatient and outpatient hospital with 3 adequate-sized classrooms. INS has large training rooms and auditorium available. Site used for pre-surgical screening of patients for USNS MERCY. Location for Subject Matter Expert Exchanges, working side-by-side with HN.

LOCATION: National Hospital, National Institute of Health, Dili Timor-Leste (Lat: -8.555949, Long: 125.593489), Bairo Bite, National Laboratory, (30 minutes from Port Dili). **FDPMU Camp set up at Camp Lenhoff for EH, ENTO, IH, MICRO, and FIELD EPI SMEEs. VET SMEE to take place at Camp Lenhoff**

PAX: ~40

DURATION: 9 Days

SCOPE OF WORK: Antenatal Care, BMET, Blood Bank, Dental, Infection Control, Nursing Skills, Nursing SMEE, Obstetrics, OR SMEE on MERCY, Postnatal Care

LIFE SUPPORT: Transportation, A/V equipment for SMEEs, Food and water for staff.

ATFP: Patrolled by FDTL and Security personnel





HA/DR Workshop

DESCRIPTION: Workshop on HA/DR training and readiness combining the efforts of US, ADF, Ministry Teams as well as various NGO's- most notably USAID and UN OCHA. Proposed Flood Scenario.

LOCATION: F-FDTL Headquarters

PAX: ~100

DURATION: 5 days

SCOPE OF WORK: Risks Associated, Risk Management, First Responder Training, Planning Considerations, Table Top Exercise

LIFE SUPPORT: Transportation, Food and Water for Staff and Participants

ATFP: F-FDTL headquarters: secure location, gated entry. Excellent, well maintained facility space.





COMREL Sites

Proposed Site	Proposed Use	Benefits
FFTL Futbol Field in Dili	Soccer Game and Expo	Bring together community for band engagement, soccer game, various arts/crafts, health info
Dili Beach strip	Beach Cleanup	Direction interaction with community members to keep clean environment
Timor Plaza (9Jun16) Christo Rei Park (11Jun16) Soccer Game/Expo (13Jun16) UNTL Park (15Jun16) Mortal Park (17Jun15)	Band Engagement	Increase relations and morale of local community





WPS in Timor-Leste

DESCRIPTION: Prevention of armed conflicts and war by implementing the gender perspective in national and international peace negotiations, activities and security policy. Increase the participation and decision making of women in peace building. Protection of the rights of women and children against sexual/gender based violence.

LOCATION: F-FDTL HQ during HADR Symposium.

SCOPE OF WORK: 5 days event. WP&S Lead to give classroom type training/seminar to targeted group of local community, officials, and F-FDTL. Topics will cover women's resiliency in disaster as it relates to specific hazards experience throughout the TLS. Topics are critical to local community and F-FDTL to further enhance resiliency to all hazard events.

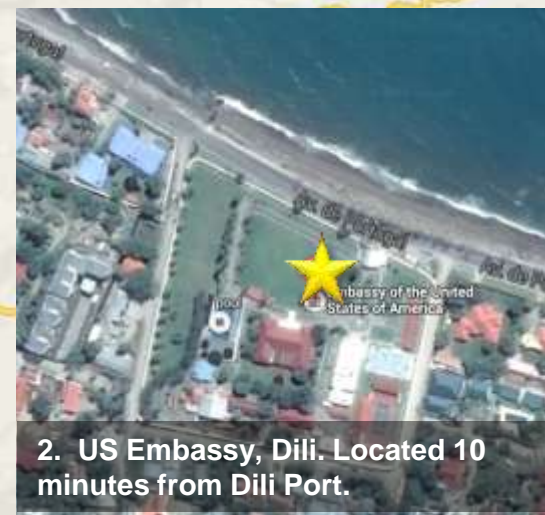
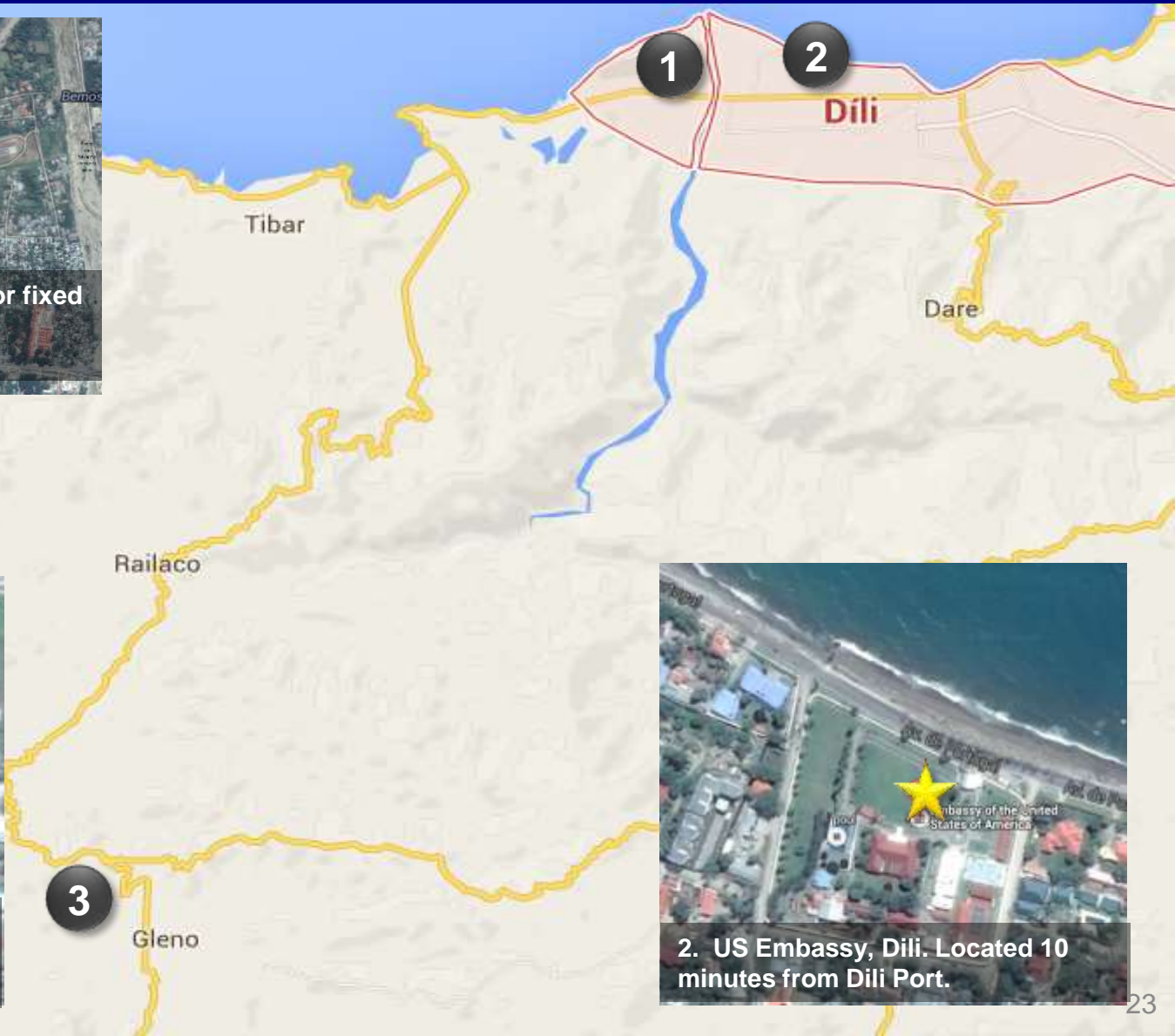
LIFE SUPPORT: Transportation, Food and Water for Staff and Participants

ATFP: F-FDTL headquarters: secure location, gated entry. Excellent, well maintained facility space.





3 Helicopter Landing Zones





ORM: Risk to Force

Hazard Threat	Assess RAC	Risk Controls & Mitigation	Revised RAC	Supervision
Terrorist Action	C, I = 2	<ul style="list-style-type: none"> - FP accompany all engagements - All sites monitored prior to engagement - Conduct threat brief for personal SA 	D, I = 3	Team Leadership
Natural Disaster	D, I = 3	<ul style="list-style-type: none"> -Positive COMMS with all Teams -Limit Distance from Fleet Landing -Brief PPRs Before Visits -Monitor Weather activity 	D, II = 4	J3 Cell and Mission AG's
Car or Water Taxi Accident	C, II = 3	<ul style="list-style-type: none"> -Contracted Drivers/Operators -Use of Seat Belts and Life Jackets 	C, III = 4	Military Leadership Present

Probability	A: Event has occurred frequently. B: Likely to occur immediately or within a short period of time. C: Event has occasionally occurred. D: Event has seldomly occurred.
Severity	I- Catastrophic: May Cause Death, loss of asset, mission failure. II- Critical: May cause severe injury, illness, mission degradation. III- Marginal: May cause minor injury, illness, mission degradation. IV- Negligible: Minimal Threat, no impact to mission success.

Probability				
	A	B	C	D
I	1	1	2	3
II	1	2	3	4
III	2	3	4	5
IV	3	4	5	5
Risk Assessment Codes 1 – Critical 2 – Serious 3 – Moderate 4 – Minor 5 – Negligible				



ORM: Risk to Mission

Hazard Threat	Assess RAC	Risk Controls & Mitigation	Revised RAC	Supervision
MER TENDER Degradation	B, II = 2	<ul style="list-style-type: none"> - Minimize use of both TENDERS for morning and evening surge times - Operate below max speed - Operate in sea state 4 and below 	C, II = 3	MERCY Leadership
HELO Degradation	C, II = 3	<ul style="list-style-type: none"> - Primarily use for logistics movement - Utilize as last resort MEDEVAC - One HELO operational per day 	D, II = 4	HSC 21 Det. OIC

Probability	<p>A: Event has occurred frequently.</p> <p>B: Likely to occur immediately or within a short period of time.</p> <p>C: Event has occasionally occurred.</p> <p>D: Event has seldomly occurred.</p>
Severity	<p>I- Catastrophic: May Cause Death, loss of asset, mission failure.</p> <p>II- Critical: May cause severe injury, illness, mission degradation.</p> <p>III- Marginal: May cause minor injury, illness, mission degradation.</p> <p>IV- Negligible: Minimal Threat, no impact to mission success.</p>

		Probability			
		A	B	C	D
Severity	I	1	1	2	3
	II	1	2	3	4
	III	2	3	4	5
	IV	3	4	5	5
Risk Assessment Codes 1 – Critical 2 – Serious 3 – Moderate 4 – Minor 5 – Negligible					



TLS Element Readiness Report

■ On-track

■ Off-track/Recoverable
by 11MAY

■ Off-track/Not
Recoverable

	MERCY	MERCY MTF	30NCR	HSC21	FP	MARFORPAC
Personnel					25 Augments 18 CRG-1	27 PAX
Equipment						
Supply						
Training					Min. 3 TRASUPS	

- Concerns:
 - MERCY: Nothing significant to report
 - MERCY MTF: Pending ID of ENT by Project Hope. Conf. list of providers from PACFLT to US Embassy 08APR
 - 30NCR: ENG SMEE lectures
 - HSC21: Nothing significant to report
 - FP: TRASUPS intend to conduct required training to all FP personnel prior to arrival per port
 - MARFORPAC: Pre-Deployment Training program (PTP)/Medical requirements currently underway



Philippines CONOPS

LT Wolf (OIC)
LTJG Isaac (AOIC)



Update from MPC

- **Translation Services: Official Request sent to Bicol University to support Medical Engagements**
- **No Translation material required**
- **WP&S Seminar confirmed**
- **HADR Symposium**
 - **Confirmed CFE-DM participation**
 - **Concurrent TTX**
 - **UNOCHA/OFDA participation pending**
- **ENG SMEE specifics**
- **APRI Funding**

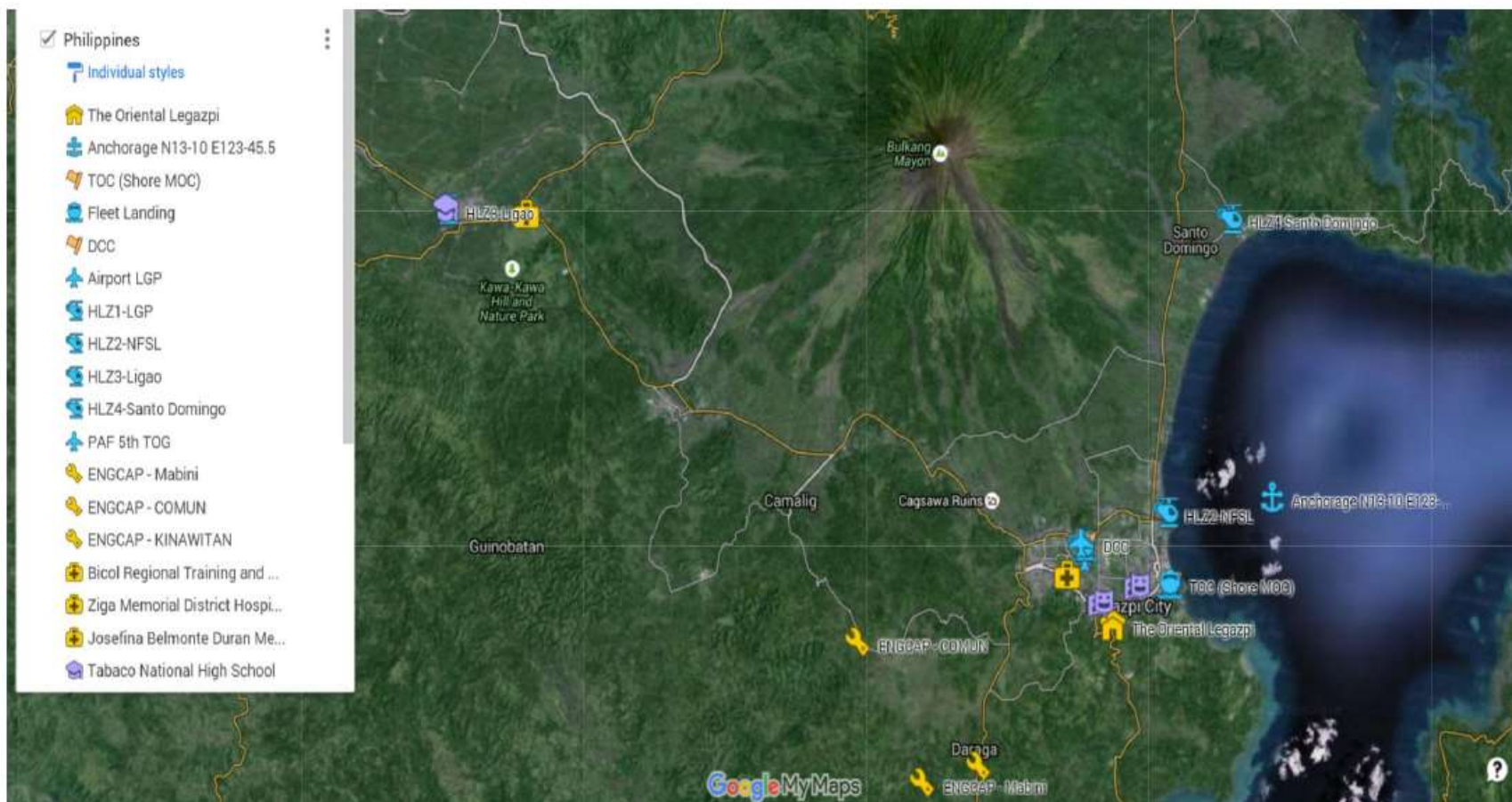


Agenda

- ***Orientation Maps***
- ***Notional Schedule***
- ***Line of Effort Overview***
- ***Proposed ENCAP/SMEE Projects***
- ***Proposed Medical SMEE/CHE Projects***
- ***HA/DR Event***
- ***COMREL***
- ***WP&S Overview***
- ***HLZ Sites***



Orientation Map





PHL Schedule

	MON 27 JUN	TUES 28 JUN	WED 29 JUN	THUR 30 JUN	FRI 01 JUL	SAT 02 JUL	SUN 03 JUL	MON 04 JUL	TUES 05 JUL	WED 06 JUL	THUR 07 JUL	FRI 08 JUL	SAT 09 JUL	SUN 10 JUL	MON 11 JUL
MERCY	AT ANCHOR – NAVAL FORCES SOUTHERN LUZON HARBOR ARRIVES: 0000L / DEPARTS: 0000L														
HIGH PROFILE EVENTS	Opening Ceremony: Legazpi (A.Dome)					Band Eng. A. Dome							Ribbon Cutting: COMUN ES		Closing Ceremony: Legazpi (ICR)
HADR								HADR Training	HADR Training	HADR Training	TTX	TTX			
MED SMEE/CHE	SETUP/Final Cord.	Ligao ES/ZIGA	Ligao ES/ZIGA	BRTH SMEE	Anislag ES/BRTH	Anislag ES/BRTH		BRTH SMEE	Tabaco HS/HOS	Tabaco HS/HOS	SMEE	SMEE	SMEE		
ENCAP	Comun/Mabini/Kinawitan	Comun/Mabini/Kinawitan	Comun/Mabini/Kinawitan	Comun/Mabini/Kinawitan	Comun/Mabini/Kinawitan	Comun/Mabini/Kinawitan	Comun/Mabini/Kinawitan	Comun/Mabini/Kinawitan	Comun/Mabini/Kinawitan	Comun/Mabini/Kinawitan	Comun/Mabini/Kinawitan	Comun/Mabini/Kinawitan	Comun/Mabini/Kinawitan	Comun/Mabini/Kinawitan	
COMREL			Tamaoyan Brgy (sports)	Band Eng. BU	NSFL (sports)	Band Eng. A. Dome	NAVFOR SOL Sports Eng	San Jose Brgy (sports)	Legazpi (Beach C.)	Band Eng. (ICR)	Painting (Comun ES)	Band Eng/sports (Comun ES)			
Women Peace and Security										HADR Symposium	WP&S Seminar				



Philippines Lines of Effort

- HA/DR Workshop: 5 day event with all relevant Civilian and Military representatives. **Focus on Typhoon and Volcano Natural Disasters with concurrent TTX**
- Engineering: Engineering Civic Action Program (ENCAP) and **Subject Matter Expert Exchanges (SMEE)**
- Medical: Cooperative Health Engagement (CHE) and Subject Matter Expert Exchanges (SMEE)
- COMREL: Band engagements and community outreach
- WP&S: Women, Peace and Security



Proposed ENCAPs

1. Kinawitan Elementary School: Construction of 7m by 18m two classroom school building with attached restrooms.

- 1 hour 15 minutes from Port Landing Zone

2. Comun Elementary School: Construction of 3 stall restroom. Remove/replace roof on existing 3 classroom building.

- 1 hour 10 minutes from Port Landing Zone

3. Mabini Elementary School: Construction of elevated water tower (300L capacity). Install electric pump into existing well. Construct hand washing station (4 faucets). Install water distribution to sinks/toilets.

- 40 minutes from Port Landing Zone

Items of Interest prevalent in all sites:

1. Considerations: Serve as shelters for surrounding areas during natural disasters.

2. Issues: Narrow road access may hamper material delivery. Inclement weather could cause significant construction delays.





ENG SMEE

SMEE Symposium Overview

DESCRIPTION: A five day held in both auditorium and workshop settings with curriculums designed to further technical knowledge bases

LOCATION: Disaster Coordination Center IVO Legazpi City.

PAX: 20 US, 100 PHL

DURATION: 5 Days (05-09JUL)

SCOPE OF WORK: Work side by side with HN partners to increase professional knowledge base while improving all hazards response and HN resiliency. Topics to cover Flood mitigation control, and construction safety.

LIFE SUPPORT: Transportation, food, and water for US Participants

ATFP: Controlled Access to DCC, minimal additional security required.





Medical Sites - Philippines



Site	Distance from Legazpi Port	Travel Time
Ligao West Central School	33km/20.5mi	1 hour
Josefina Belmonte Duran Memorial Hospital	28km/17.4mi	1 hour
Tabaco National High School	26km/16mi	1 hour
Ziga Memorial Hospital	27km/16.7mi	1 hour
Bicol Regional Training and Teaching Hospital (BRTTH)	4km/2.5mi	20 minutes
Anislag Elementary School	14km/8.7mi	45 minutes
Naval Forces Southern Luzon (FDPMU)	3km/1.9mi	15 minutes



Medical CHE Sites

DESCRIPTION: Proposed sites for Cooperative Health Engagements (CHE) and health education fairs, to be combined with Department of Health Medical Caravan programs. All sites have power and water supply. All currently utilized as EVAC sites.

LOCATIONS: Tabaco National High School (13.354300, 123.716158), Anislag Elementary School (13.074821, 123.699389), Ligao West Central School (13.241199, 123.531018)

PAX: 65 total per event

DURATION: 2 days at Anislag, Ligao & Tabaco City

SCOPE OF WORK: Minor direct care in partnership with AFP and local health officials to include medical examinations, physical therapy, optometry, pharmacy. Health education and promotion to include preventive medicine, communicable/non-communicable disease prevention, dental hygiene. **Veterinarian engagement added to each site.**

LIFE SUPPORT: Transportation, tents, chairs, tables, power/water as necessary, MREs, portable toilets

ATFP: Single entry/egress, crowd control, non-fenced perimeters





Medical SMEE Sites

DESCRIPTION: Three government-owned hospitals in each district of Albay Province. Bicol Regional Training & Teaching Hospital (BRTTH) is the primary teaching hospital in Albay. Other hospitals are considered community hospitals with significant mother/baby populations. All sites have conference room and A/V capabilities. BRTTH is also best recommended site for surgical screening.

LOCATION: BRTTH, Legazpi City (13.146906, 123.724444), Josefina Belmonte Duran Memorial Hospital, Ligao City (13.239311, 123.556240), Ziga Memorial Hospital, Tabaco City (13.358047, 123.721367)

PAX: Dependent on SMEE/seminar. Major seminars to be held at BRTTH conference rooms.

DURATION: 2-5 days

SCOPE OF WORK: BMET, Nursing, Helping Babies Breathe, Pediatrics, Ultrasound, Disaster Management Medical Symposium, ER, Dental, Basic First Responders Course, Lab, Microbiology, Communicable Diseases, Pharmacy, Blood Bank

LIFE SUPPORT: Transportation, food/water

ATFP: Patrolled by PNP, single patient entry/egress





HADR Exercise

DESCRIPTION: 5 Day HADR Exercise conducted in collaborative effort among AFP, Local Community HN, LGU, PN, and US key stakeholders. Training/Workshops to be conducted over first 3 days focusing on Disaster Preparedness and response. Final 2 days consist of **concurrent** Table Top Exercise (TTX) for both a Category 5 Typhoon and Volcano disaster.

LOCATION: Disaster Coordination Center IVO Legazpi City.

PAX: ~40 (**100-150 HN**)

DURATION: 5 days (8 hours) 05-09 July 2016

SCOPE OF WORK: Work side-by-side with HN partners to conduct hands on and lecture training covering various disaster related topics. USMC, USN, CTF SME to present trainings.

LIFE SUPPORT: Transportation, Presentation Equipment (laptop, projector), Chairs, Tables, Extension Cords.

ATFP: Fenced perimeter. Gated, controlled access to facility.





WP&S in Philippines

OBJECTIVE: Facilitate Women Peace and Security Seminar led by NZL WP&S planners to enhance collaboration with GAD as well as provide mentorship and group discussions. Additionally WP&S will be incorporated in the HADR exercise. Topics will include women in disaster as it relates to specific hazards experience throughout the PHL. Topics are critical to local community and AFP to further enhance resiliency to all hazard events.

LOCATION/TIME: 06JUL16 Disaster Coordination Center (DCC) for HADR Symposium
07JUL16 BRTTH for WP&S Seminar

SCOPE OF WORK: WP&S Lead to give classroom type training/seminar to targeted group of local community, officials, and AFP. Anticipate approximately 25 participants from HN.

PP STAFF: NZL WP&S

METRICS: WP&S Seminar to demonstrate capacity to cope and rebound from all hazard events.

FACILITY REQUIREMENTS: Training space, presentation equipment, restrooms.

LIFE SUPPORT REQUIREMENTS: Transportation, food/water



COMREL Sites

Proposed Site	Proposed Use	Benefits
Albay Astrodome	Band Concert	Capacity (5,000); Centralized location
Ibalang Centrum for Recreation	Band Concert	Capacity (3,000); Centralized location; Renovated interior
Beach (South of Port District)	Beach Cleanup	Local access from port
Tamaoyan Brgy. Basketball Court	Basketball Game with Members of US Military and Community Members	Direct interaction and games with Community Members
San Jose St. Brgy. Basketball Court	Basketball Game with Members of US Military and Community Members	Direct interaction and games with Community Members; Games played under covered basketball court
School – Ilawod-Comun Road	“School Painting Day” in conjunction with US Navy Engineers Rebuilding Project	Community Members working alongside members of US Military
School – Ilawod-Comun Road	Basketball/Volleyball (Band)	Incorporated into ribbon cutting ceremony
NAVFORSOL	Mil to Mil Sport Engagement (01 July) and (03 July + Band)	Direct interaction with AFP
Albay Astrodome	Opening Ceremony (Band)	Large capacity, key leaders
Ibalang Centrum for Recreation	Closing Ceremony (Band)	Large Capacity, key leaders
Bicol University	Band Concert	Open forum, amphitheatre set up
USNS MERCY	Reception	200 participants (100 HN)
Kinawitan/Mabini ES	Ribbon Cutting Ceremony (Band)	Same day, direct movement from one ES to next



4 Landing Zones



4. Santo Domingo K-12 Central School, Soccer Field: UH-1 only



2. Naval Forces Southern Luzon Base Helipad: MH-60S



ORM: Risk to Force

Hazard Threat	Assess RAC	Risk Controls & Mitigation	Revised RAC	Supervision
Terrorist Action	C, I = 2	<ul style="list-style-type: none"> - FP accompany all engagements - All sites monitored prior to engagement - Conduct threat brief for personal SA 	D, I = 3	Team Leadership
Natural Disaster	D, I = 3	<ul style="list-style-type: none"> -Positive COMMS with all Teams -Limit Distance from Fleet Landing -Brief PPRs Before Visits -Monitor Weather activity 	D, II = 4	J3 Cell and Mission AG's
Car or Water Taxi Accident	C, II = 3	<ul style="list-style-type: none"> -Contracted Drivers/Operators -Use of Seat Belts and Life Jackets 	C, III = 4	Military Leadership Present

Probability	A: Event has occurred frequently. B: Likely to occur immediately or within a short period of time. C: Event has occasionally occurred. D: Event has seldomly occurred.
Severity	I- Catastrophic: May Cause Death, loss of asset, mission failure. II- Critical: May cause severe injury, illness, mission degradation. III- Marginal: May cause minor injury, illness, mission degradation. IV- Negligible: Minimal Threat, no impact to mission success.

		Probability			
		A	B	C	D
Severity	I	1	1	2	3
	II	1	2	3	4
	III	2	3	4	5
	IV	3	4	5	5
Risk Assessment Codes 1 – Critical 2 – Serious 3 – Moderate 4 – Minor 5 – Negligible					



ORM: Risk to Mission

Hazard Threat	Assess RAC	Risk Controls & Mitigation	Revised RAC	Supervision
MER TENDER Degradation	B, II = 2	<ul style="list-style-type: none"> - Minimize use of both TENDERS for morning and evening surge times - Operate below max speed - Operate in sea state 4 and below 	C, II = 3	MERCY Leadership
PP16 Mission Dates	C, II = 3	<ul style="list-style-type: none"> - Begin retrograde NLT 09JULY. - Deploy TOC only 11JULY - Execute SOE as written 	D, II = 4	Mission Staff, J3 Cell, OIC
HELO Degradation	C, II = 3	<ul style="list-style-type: none"> - Primarily use for logistics movement - Utilize as last resort MEDEVAC - One HELO operational per day 	D, II = 4	HSC 21 Det. OIC

Probability	<p>A: Event has occurred frequently.</p> <p>B: Likely to occur immediately or within a short period of time.</p> <p>C: Event has occasionally occurred.</p> <p>D: Event has seldomly occurred.</p>
Severity	<p>I- Catastrophic: May Cause Death, loss of asset, mission failure.</p> <p>II- Critical: May cause severe injury, illness, mission degradation.</p> <p>III- Marginal: May cause minor injury, illness, mission degradation.</p> <p>IV- Negligible: Minimal Threat, no impact to mission success.</p>

		Probability			
		A	B	C	D
Severity	I	1	1	2	3
	II	1	2	3	4
	III	2	3	4	5
	IV	3	4	5	5
Risk Assessment Codes 1 – Critical 2 – Serious 3 – Moderate 4 – Minor 5 – Negligible					



PHL Element Readiness Report

■ On-track

■ Off-track/Recoverable
by 11MAY

■ Off-track/Not
Recoverable

	MERCY	MERCY MTF	30NCR	HSC21	FP	MARFORPAC
Personnel					25 Augments 18 CRG-1	27 PAX
Equipment		01JUN				
Supply						
Training					Min. 3 TRASUPS	

- Concerns:
 - MERCY: Nothing significant to report
 - MERCY MTF: Pending ID of ENT by Project hope. Conf. list of providers from PACFLT Surgeon to Philippines Regulatory Commission for review – 27APR
 - 30NCR: ENG SMEE
 - HSC21: Nothing significant to report
 - FP: TRASUPS intend to conduct required training to all FP personnel prior to arrival per port
 - MARFORPAC: Pre-Deployment Training program (PTP)/Medical requirements currently underway



Vietnam CONOPS

LCDR Dao (OIC)
LTJG Hardie (AOIC)



VNM Specific Guidance

- **Uniform in country**
 - **Day-to-day:**
 - **PP Polo shirt/khaki pants for all PP16 personnel to include those topside and on pier**
 - **Official Events**
 - **USN: Summer Whites**
 - **Special Liberty Rules: NO OVERNIGHT LIBERTY FOR ALL MISSION PERSONNEL**
 - **Must remain within Da Nang City Limits**
 - **Last boat departing pier to MER is at 2330, All personnel onboard NLT Midnight**
 - **Liberty card with numbers assigned for all personnel going ashore**
 - **No Helicopter operations**
 - **No MER Boats/Divers in Water**
 - **FP agreements**
 - **U.S personnel liaison with VBG**
 - **Border Guard primary Seaport Protection (NO SOFA)**
 - **No Weapons allowed for PP16 FP personnel; includes topside rovers**
 - **Personnel enter/exit Da Nang with same mode of transportation (fly-in has to fly-out, sail-in has to sail-out)**
 - ***No Visas for personnel arriving by sea**
- * Unless previously approved through USDAO Hanoi**



Update from MPC

- **Translator Services:** Requirements sent for contracting
- **Translation Material:** Due date 2MAY
- **Dental CHE locations confirmed**
- **COMREL (orphanage/school) locations confirmed**
- **ENG SMEE/ 2 MED SMEE:** requiring hotel to be contracted as venue locations
- **List of MED specialists augment from PN/Project Hope**
- **WPS topic in development for PP17**
- **Departure time from Da Nang is now at 0900**
- **HA/DR Event: PP16 mission personnel to participate in the audience to increase knowledge in VNM HA/DR efforts**
 - **19-21 Jul: NPS Led series of lecture**
 - **22-26 Jul: NZL Led – HADR lectures & Culminating Drill**



Agenda

- ***Orientation Maps***
- ***Notional Schedule***
- ***Line of Effort Overview***
- ***Proposed ENCAP/SMEE Projects***
- ***Proposed Medical SMEE/CHE Projects***
- ***HA/DR Event***
- ***COMREL***
- ***ORM: Risk to Force***
- ***ORM: Risk to Mission***
- ***VNM Element Readiness Report***



Orientation Map





VNM Schedule

	FRI 15 JUL	SAT 16 JUL	SUN 17 JUL	MON 18 JUL	TUES 19 JUL	WED 20 JUL	THURS 21 JUL	FRI 22 JUL	SAT 23 JUL	SUN 24 JUL	MON 25 JUL	TUES 26 JUL	WED 27 JUL	THURS 28 JUL
MERCY	AT ANCHOR - DA NANG HARBOR ARRIVES: 0900L / DEPARTS: 0900L													
HIGH PROFILE EVENTS	Opening Ceremony	Joint Reception onboard SHIMOKITA										DPC Hosted Reception	Ribbon Cutting	Closing Ceremony
HADR					Workshop, SAR SMEE	Workshop, SAR SMEE	Workshop, SAR SMEE	Disaster Drill Training	Disaster Drill Training		Disaster Drill Rehearsal	Disaster Drill		
MED SMEE/CHE	SETUP/Final Cord.	SMEE/CHE/USNS Mercy CHE	SMEE/CHE/USNS Mercy CHE	SMEE/CHE/USNS Mercy CHE	SMEE/CHE/USNS Mercy CHE	SMEE/CHE/USNS Mercy CHE	SMEE/CHE/USNS Mercy CHE	SMEE/CHE/USNS Mercy CHE	SMEE/CHE/USNS Mercy CHE		SMEE/CHE/USNS Mercy CHE	SMEE/CHE/USNS Mercy CHE	SMEE/CHE/USNS Mercy CHE	
ENCAP	SETUP/Final Cord.	ENCAP	ENCAP	ENCAP, SMEE	ENCAP, SMEE	ENCAP, SMEE	ENCAP, SMEE	ENCAP, SMEE	ENCAP		ENCAP	ENCAP	ENCAP	
COMREL		Ship Tours	Ship Tours, Band Eng.	Ship Tours, Life Guard Training, School Visit	Ship Tours, Life Guard Training,	Ship Tours, Life Guard Training, School Visit	Ship Tours, Life Guard Training,	Ship Tours, Life Guard Training, School Visit	Ship Tours	Ship Tours, Band Eng.	Life Guard Training, School Visit	, Life Guard Training,	Ship Tours	
WPS														



Vietnam Lines of Effort

- Engineering: Engineering Civic Action Program (ENCAP) and Subject Matter Expert Exchanges (SMEE)
- Medical: Cooperative Health Engagement (CHE) and Subject Matter Expert Exchanges (SMEE)
- HA/DR Workshop: **7** days event with all relevant Civilian and Military representatives.
- COMREL: Band engagements and community outreach



ENCAP

1. **Hoa Phu Primary School:** Roof work, repairing plumbing and water storage tank, and various updates to property. Approximately 45 minutes drive from Da Nang port.
2. **Chinh Gian Medical Station:** Project includes repairing the leaking roof by installing ridge cap, flashing, and patching holes as well as making the first floor bathroom usable. 30 Minutes from Da Nang Port.
3. **Rang Dong Kindergarten School :** Improvements to second classroom to include interior ceilings, flooring, and windows. Repair restrooms and reroute drainage to prevent flooding. 30 minutes from Da Nang Port.
4. **Tuong Lai Specialized School:** Repair the damaged vehicle gate and install new signage. Prime and paint portions of the exterior of the facility. 20 minutes from Da Nang port.





Engineer SMEE

What: 5 Day Engineering Symposium including ten, 2 – 4 hours Subject Matter Expert Exchanges (SMEE) conducted over 5 days with morning and afternoon sessions to provide training and build SMEE working relationships with host nation.

Who: 20 to 30 participants. Local, regional, and national government officials, military, non-governmental and private sector engineers, planners, contractors, and academia (faculty and students).

Where: Novotel (Or similar Venue contracted by FLC)

When: Two sessions, daily from 18-22 Jul 2016

Why: Facilitate HA/DR training, international professional engineering exchange, and increase societal disaster resilience.

Topics:

- Post Event Building Damage Assessments
- Coastal Protection and Erosion Control
- Flood Mitigation Control





Medical Sites



Site	Travel Time (with traffic)
1. USNS Mercy	
2. Pier	45 minutes
3. Da Nang General Hospital	20 minutes
4. Ortho-Rehab Hospital	20 minutes
5. Military Hospital #17	20 minutes
6. C Hospital	25 minutes
7. 115 Center	25 minutes



Medical CHE Sites

DESCRIPTION: Proposed sites for Cooperative Health Engagements (CHE) and health education fairs.

LOCATIONS: USNS Mercy, Da Nang General Hospital, Ortho-Rehab Hospital, Military Hospital #17, C Hospital

PAX: ~75 total per event

DURATION: 8 Days

SCOPE OF WORK: Minor direct care and surgeries in partnership with HN staff and local health officials to include medical examinations, physical therapy, optometry, pharmacy. Health education and promotion to include preventive medicine, communicable/non-communicable disease prevention, dental hygiene, etc.

LIFE SUPPORT: Transportation, tents, chairs, tables, power/water as necessary, MREs, portable toilets

ATFP: HN Security personnel and ATFP staff on site.





Medical SMEE Sites

DESCRIPTION: Five government-owned hospitals throughout Da Nang. All sites have conference room and A/V capabilities.

LOCATION: USNS Mercy, Da Nang General Hospital, Ortho-Rehab Hospital, Military Hospital #17, C Hospital, 115 Center.
Oncology Hospital, Burn/Restorative SMEE – Hotel TBD and Dental Summit – Hotel TBD

PAX: Dependent on SMEE/seminar. Major seminars to be held at Da Nang General Hospital.

DURATION: 13 days

SCOPE OF WORK: BMET, Nursing, Helping Babies Breathe, Pediatrics, Ultrasound, Disaster Management Medical Symposium, ER, Dental, Basic First Responders Course, Lab, Microbiology, Communicable Diseases, Pharmacy, Blood Bank, etc.

LIFE SUPPORT: Transportation, food/water

ATFP: Patrolled by HN security and ATFP personnel.





HADR Event Concept

- **DPC provided TYPHOON scenario script. NPS, NZL, JPN, USCG, and USN planners devising lectures agenda and where to integrate into the drill.**
- **Background:** Typhoon Warning Center released warning for South East Asia to include Vietnam. Prediction models reveal typhoon in the vicinity of Da Nang City. VINASARCOM and DMCC assumed the lead for disaster management effort.
- **Concept:** 7 days effort (19 Jul – 26 Jul)
 - **19-21 Jul: NPS Led series of lecture**
 - **22-26 Jul: NZL Led**
 - 22 Jul (Fri) – 23 Jul (Sat) Hands on Training Days
 - 24 Jul (Sun)- Break
 - 25 Jul (Mon): Rehearsal and walk through of drill
 - 26 Jul (Tues): Commence drill and debrief results





COMREL Sites

Proposed Site	Proposed Use	Benefits
Street Children Center, Village of Hope, Hoa Mai, Charity Vocational, Dava Nursing	Orphanage visit/Small Band engagement	Increase relations and morale of local community
Soccer stadium	Futsal Game and cook out	Bring together community for sports and entertainment
Bien Dong Beach Park	Life guard training	Improve local community in response to rescuing personnel at shoreline
Skyline School (Vietnamese American Association)	English conversation	Interact with local students and exchanging of cultures
Bien Dong Beach Park Bach Dang Street	2 Big band engagement	Bring community together with entertainment and interaction opportunity with HN locals





ORM: Risk to Force

Hazard Threat	Assess RAC	Risk Controls & Mitigation	Revised RAC	Supervision
Terrorist Action	C, I = 2	<ul style="list-style-type: none"> - FP accompany all engagements - All sites monitored prior to engagement - Conduct threat brief for personal SA 	D, I = 3	Team Leadership
Natural Disaster	D, I = 3	<ul style="list-style-type: none"> -Positive COMMS with all Teams -Limit Distance from Fleet Landing -Brief PPRs Before Visits -Monitor Weather activity 	D, II = 4	J3 Cell and Mission AG's
Car or Water Taxi Accident	C, II = 3	<ul style="list-style-type: none"> -Contracted Drivers/Operators -Use of Seat Belts and Life Jackets 	C, III = 4	Military Leadership Present

Probability	A: Event has occurred frequently. B: Likely to occur immediately or within a short period of time. C: Event has occasionally occurred. D: Event has seldomly occurred.
Severity	I- Catastrophic: May Cause Death, loss of asset, mission failure. II- Critical: May cause severe injury, illness, mission degradation. III- Marginal: May cause minor injury, illness, mission degradation. IV- Negligible: Minimal Threat, no impact to mission success.

		Probability			
		A	B	C	D
Severity	I	1	1	2	3
	II	1	2	3	4
	III	2	3	4	5
	IV	3	4	5	5
Risk Assessment Codes 1 – Critical 2 – Serious 3 – Moderate 4 – Minor 5 – Negligible					



ORM: Risk to Mission

Hazard Threat	Assess RAC	Risk Controls & Mitigation	Revised RAC	Supervision
Liberty Incident Ashore	B, II = 2	<ul style="list-style-type: none"> - Conduct Port Brief - Observe all rules and regulations as dictated in Decree 104 - Implement Liberty Risk as required 	C, II = 3	Mission Commander, OIC, Shore Patrol, all personnel
PP16 Mission Dates	C, II = 3	<ul style="list-style-type: none"> - Begin retrograde NLT 26JULY. - Deploy TOC and critical personnel only 28JULY - Execute SOE as written 	D, II = 4	Mission Staff, J3 Cell, OIC

Probability	<p>A: Event has occurred frequently.</p> <p>B: Likely to occur immediately or within a short period of time.</p> <p>C: Event has occasionally occurred.</p> <p>D: Event has seldomly occurred.</p>
Severity	<p>I- Catastrophic: May Cause Death, loss of asset, mission failure.</p> <p>II- Critical: May cause severe injury, illness, mission degradation.</p> <p>III- Marginal: May cause minor injury, illness, mission degradation.</p> <p>IV- Negligible: Minimal Threat, no impact to mission success.</p>

		Probability			
		A	B	C	D
Severity	I	1	1	2	3
	II	1	2	3	4
	III	2	3	4	5
	IV	3	4	5	5
Risk Assessment Codes 1 – Critical 2 – Serious 3 – Moderate 4 – Minor 5 – Negligible					



VNM Element Readiness Report

■ On-track

■ Off-track/Recoverable
by 11MAY

■ Off-track/Not
Recoverable

	MERCY	MERCY MTF	30NCR	HSC21	FP	MARFORPAC
Personnel					25 Augments 18 CRG-1	27 PAX
Equipment		02MAY				
Supply						
Training					Min. 3 TRASUPS	

- Concerns:

- MERCY: Nothing significant to report
- MERCY MTF: Pending ID of ENT/Ortho Spine (02MAY). Conf. list of providers from PACFLT Surgeon to US Embassy – 17MAY
- 30NCR: ENG SMEE
- HSC21: Nothing significant to report
- FP: TRASUPS intend to conduct required training to all FP personnel prior to arrival per port
- MARFORPAC: Pre-Deployment Training program (PTP)/Medical requirements currently underway



Malaysia CONOPS

LCDR Grawunder (OIC)

LT Baldwin (AOIC)



Update from MPC

- **Translation Material: Not Applicable**
- **Translation Services: Not Required**
- **CHE at Tasik Chini – Green Light to Plan**
 - **56 Personnel remain overnight (2 Nights / 3 Days)**
 - **NCIS Report released on SIPR for Review**
- **HLZs at Kuantan Naval Base – Written Approval Pending**



Agenda

- ***Orientation Maps***
- ***Notional Schedule***
- ***Line of Effort Overview***
- ***Proposed ENCAP/SMEE Projects***
- ***Proposed Medical SMEE/CHE Projects***
- ***HA/DR Event***
- ***COMREL***
- ***W,P,S Overview***
- ***HLZ Sites***



Areas of Interest (ENG)





Areas of Interest (MED/COMREL)





MYS Schedule

	MON 01 AUG	TUES 02 AUG	WED 03 AUG	THURS 04 AUG	FRI 05 AUG	SAT 06 AUG	SUN 07 AUG	MON 08 AUG	TUES 09 AUG	WED 10 AUG	THURS 11 AUG	FRI 12 AUG	SAT 13 AUG	SUN 14 AUG
MERCY	AT ANCHOR – KUANTAN HARBOR ARRIVES: TBD/ DEPARTS: TBD													
HIGH PROFILE EVENTS	Arrive	Opening Ceremony	MER Tours ISO of APMHE (TBD)	MER Tours (TBD)	MER Tours (TBD)	MER Tours (TBD)	MER Tours (TBD)	MER Tours (TBD)	MER Tours (TBD)	MER Tours (TBD) <u>RECEPTION</u>	MER Tours (TBD)	Ribbon Cutting Ceremony,* Closing Ceremony*	Closing Ceremony*	Closing Ceremony*
HADR/SAREX								Workshop, SAR Training	Workshop, SAR Training	Disaster Drill STAFFEX		SAREX*		SAREX*
MED SMEE/CHE	APMHE	SMEE, APMHE, FDPMU Set-Up, and Surgical Screenings	SMEE, APMHE, FDPMU, and Surgical Screenings	SMEE, APMHE, FDPMU, and Surgeries on MER	SMEE, APMHE, FDPMU, and Surgeries on MER	CHE, SMEE, FDPMU, and Surgeries on MER	CHE, SMEE, FDPMU, and Surgeries on MER	SMEE, FDPMU, CHE and Surgeries on MER	SMEE, FDPMU, and Surgeries on MER	SMEE, FDPMU, and Surgeries on MER	SMEE, FDPMU, and Surgeries on MER	SMEE, FDPMU, and Surgeries on MER	SMEE	
ENCAP	SETUP/Final Cord.	ENCAP	ENCAP	ENCAP	ENCAP	ENCAP	ENCAP*	ENCAP, SMEE	ENCAP, SMEE	ENCAP, SMEE	ENCAP, SMEE	ENCAP, SMEE	ENCAP	
COMREL			Band Eng	Orphanage Visit* Band Eng	Band Eng Sports Day*	Band Eng and Blood Drive	Band Eng Sports Day*	Band Eng	Band Eng		Soccer Game*			
WPS		MED SMEE Coverage	MED SMEE Coverage	MED SMEE Coverage	MED SMEE Coverage	MED SMEE Coverage	MED SMEE Coverage	MED SMEE Coverage, HADR and SAREX	MED SMEE Coverage, HADR and SAREX	MED SMEE Coverage	MED SMEE Coverage	MED SMEE Coverage	MED SMEE Coverage	



Malaysia Lines of Effort

- **Engineering:** Engineering Civic Action Program (ENCAP) and Subject Matter Expert Exchanges (SMEE)
- **Medical:** Cooperative Health Engagement (CHE) and Subject Matter Expert Exchange (SMEE)
- **COMREL:** Band Engagements and Community Outreach
- **Public Affairs:** Media engagement, internal coverage of key events. Embassy/CTF 73 supported media embark during SAREX.
- **WPS:** Women, Peace, and Security
- **HA/DR SAREX:** 3 Events
 - 3 Days In-Port and 1 Day At-Sea



ENCAP

1. Tabika Kemas Kindergarten Renovation:

Provides much needed renovations including a new ceiling, new windows and electrical improvements.

2. Sekolah Kebangsaan Wira School Renovation:

Project includes replacement of drop ceilings in two classrooms and a stairwell, painting of the community hall, and expansion of an outdoor physical education area to accommodate the large student body.

Items of Interest prevalent in all sites:

1. Considerations: The general vicinity of both schools are prone to frequent showers throughout the year and both projects aid in Humanitarian Assistance and in turn can be staging points for relief efforts after a Natural Disaster.

2. Issues: Overhead work, heavy lifting, falling debris are possible hazards to personnel.





Engineer SMEE

- **Engineering Subject Matter Expert Exchanges (SMEE) will be conducted at University of Malaysia, Pahang Campus, 8-12 AUG.**
- **Topics for Discussion Include:**
 - Flood mitigation and simulation
 - Post Disaster management
 - Water Supply management





Medical Sites - Malaysia

Site	Distance from Kuantan Naval Base	Travel Time (with traffic)
<i>Pahang State Health Office</i>	29 Km	28 min
Hospital Tengku Ampuan Afzan (HTAA)	34 Km	35 min
HTAA School of Nursing	34 Km	35 min
International Islamic University Medical	24 Km	22 min
Dept of Vet Services	28 Km	35 min
Tasik Chini	115 Km	90 min





Medical CHE Sites

DESCRIPTION: Primary Care Services, Cataract Screenings, SMEEs on Public Health (sanitation, etc.), Extractions, Oral Hygiene Instruction, Correction of Refractive Errors, documentation of visit on HN medical forms.

LOCATIONS: Tasik Chini- Community Center, Clinic and Elementary School

PAX: 6-8 Aug, 56 Personnel Total per Day

DURATION: 3 days

SCOPE OF WORK: Direct care in partnership with MAF and local health officials to include: Primary Care Services, Cataract Screenings, SMEEs on Public Health, Dental Hygiene and Extractions, Check-Ups, Vet SMEEs, and Optometry.

LIFE SUPPORT: Transportation, Tents, Chairs, Tables, Power/Water as necessary, MREs, and Portable toilets.





Professional SMEE (Side-By-Side)

DESCRIPTION: Providers, Nurses, Dental, Vets, and Ancillary Support Services will work side by side with their counterparts in their respective fields.

LOCATION: HTAA Hospital; Kuliyah Nursing School;
Dept of Vet Services; Islamic University Medical/Dental Facility;
Pahang State Health Office; Tasik Chini (x3)

PAX: 9 MERCY Staff from different expertise/day

DURATION: 2-12 Aug 2016, 10 days

SCOPE OF WORK: Side-By-Side Exchanges- Emergency Medicine Physician, Blood Drive/Donations, Pediatrician, Optometry, Internal Medicine, Family Practice, RNs, Vets, Dentists, Ancillary Services, and Other Support Services

LIFE SUPPORT: MREs, Bottled Water, Vans, Hand Sanitizer.





Medical SMEE (Symposium)

OBJECTIVE: Facilitate collaboration and awareness of **evidence based** practices and current trends in patient care and processes improvement for Host Nation and PP 16 staff in following topics:

- 1) Women, Peace, and Security
- 2) Traumatic Orthopedic Injuries
- 3) Management of Dirty Wounds
- 4) Emerging Infectious Disease/Zoonotic Disease
- 5) PTSD
- 6) Islam, Medicine and Cultural Considerations
- 7) Expeditionary Medicine/Casualty Care In An Austere Environment
- 8) Infection Control
- 9) Education Through Medical Simulation
- 10) Quality Control
- 11) Patient Safety

LOCATION: International Islamic University Medical (IIUM).

SCOPE OF TRAINING: Live lecture and power point presentation.

DURATION/TIME: 4 days.

PP STAFF: 11 Pacific Partnership (PP16) Staff Each Day.

PARTNERS: Staff from IIUM and HTAA Hospital and PP 16 staff.

METRICS: Post lecture survey.

FACILITY REQUIREMENTS: 600 seat auditorium, computer and audio video equipment.

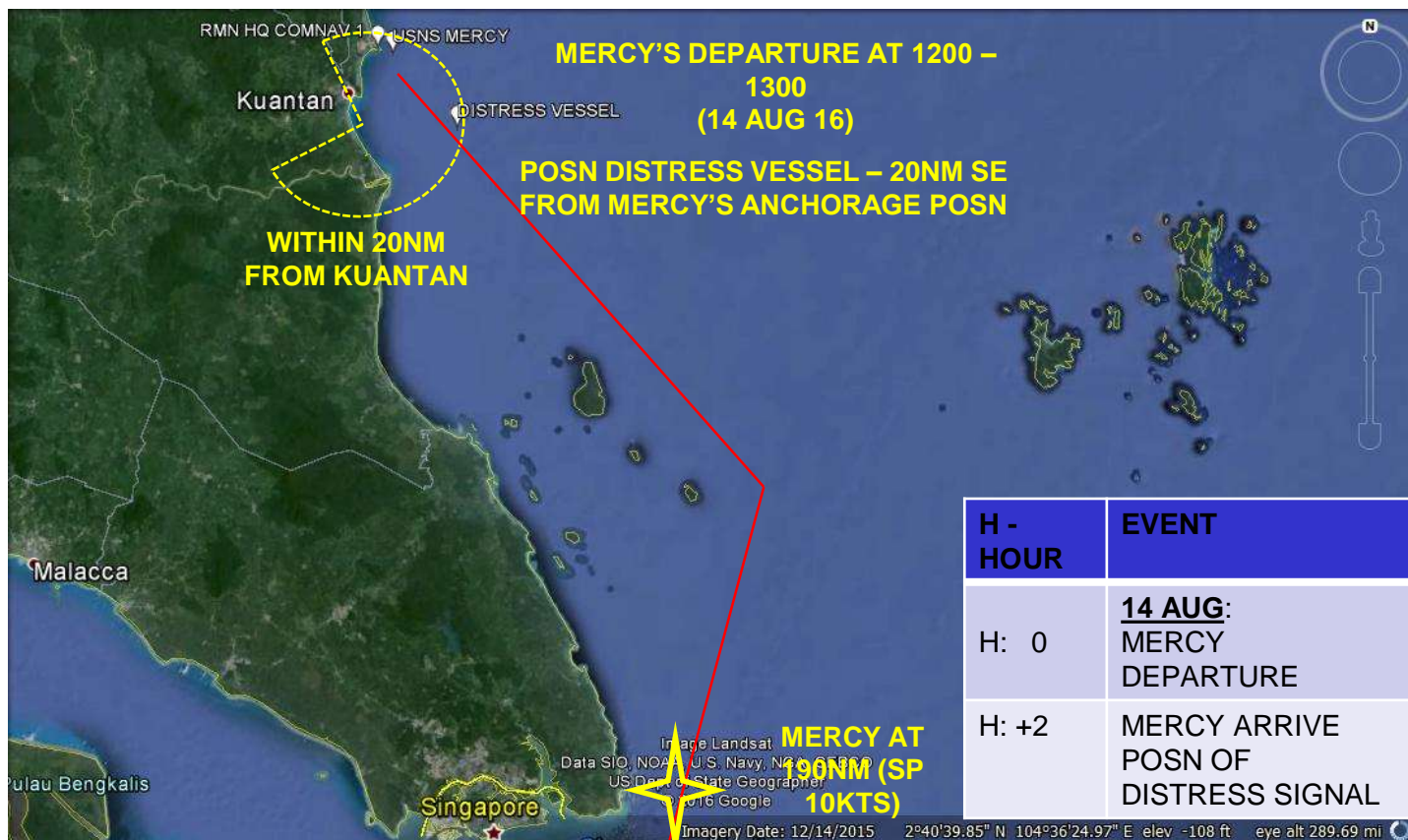
LIFE SUPPORT REQUIREMENTS: Bus for personnel and equipment on training days indicated in schedule, water and MREs.



Malaysia HA/DR Events:

3 Separate Events

1. C2 Training: 08-09 AUG 2016
2. STAFFEX: 10 AUG 2016
3. SAREX FTX: Day MERCY gets U/W
 - a. 20-30 NM within Kuantan





COMREL Sites

Location	Proposed Use	Benefits
Auditorium Al-Haimi, Kuantan (Aug 2)	Opening Ceremony	Controlled Access, On base
Islamic University (Aug 3)	Band Concert at Medical Symposium	Direct interaction with Community Members
Compedak Bay Beach (Aug 5 or 7 tent)	Band Concert/Soccer Game	Centralized location; Regional leaders and dignitaries expected to attend; radio engagement to promote band performances
East Coast Mall (Aug 6)	Band Concert/Blood Drive	Centralized location; interaction with Community Members
Rumah Anak dan Miskin D'Nasti (TBD)	Orphanage Visit/Band Concert	Direct interaction with Community Members
USNS MERCY (Aug 10)	Reception	Key Leader Engagement
Tabika Kemas or Sekolah Kebangsaan Wira (11 Aug)	Soccer Game	Direct interaction with Community Members
Auditorium Al-Haimi, Kuantan (Aug 13)	Closing Ceremony	Controlled Access, On base



WPS in Malaysia

- **Integration of WPS in Medical and HA/DR Lines of Effort**
 - **SMEEs**
 - Raise awareness of UNSCR 1325.
 - Build Mil-Mil relationship through men and women sharing their experiences in the military.
 - Incorporated in ENG, MED, and SAREX SMEEs.
 - Stand Alone Mil-to-Mil Engagement on 10 Aug.
 - **SAREX**
 - Integration into planning and execution.



1 Helicopter Landing Zone

- **Kuantan Naval Base – Written Approval Pending**
 - Soccer Field
 - Parking Lot





ORM: Risk to Force

Hazard Threat	Assessed RAC	Risk Controls & Mitigation	Revised RAC	Supervision
Terrorist Action	C, I = 2	-HN FP at All Engagements -PDSS FP Review of all Sites -Threat Brief for Personal SA	D, I = 3	Team Leadership
Natural Disaster	D, I = 3	-Positive COMMS with all Teams -Limit Distance from Fleet Landing -Brief PPRs Before Visits -Monitor Weather activity	D, II = 4	J3 Cell and Mission AG's
Car or Water Taxi Accident	C, II = 3	-Contracted Drivers/Operators -Use of Seat Belts and Life Jackets	C, III = 4	Military Leadership Present

Probability	A: Event has occurred frequently. B: Likely to occur immediately or within a short period of time. C: Event has occasionally occurred. D: Event has seldomly occurred. E: Event is unlikely to occur.
Severity	I- Catastrophic: May Cause Death, loss of asset, mission failure. II- Critical: May cause severe injury, illness, mission degradation. III- Marginal: May cause minor injury, illness, mission degradation. IV- Negligible: Minimal Threat, no impact to mission success.

Probability				
	A	B	C	D
I	1	1	2	3
II	1	2	3	4
III	2	3	4	5
IV	3	4	5	5
Risk Assessment Codes 1 – Critical 2 – Serious 3 – Moderate 4 – Minor 5 – Negligible				



ORM: Risk to Mission

Hazard Threat	Assessed RAC	Risk Controls & Mitigation	Revised RAC	Supervision
MER Tender Degradation	B, II = 2	-Limit Tender use during the 'Rush' -Operate Below Sea State 5 and IAW ROR.	C, II = 3	MERCY Leadership
PP16 Mission Dates	C, II = 3	-ADVON: 11-31 JULY -Retrograde NLT 12 AUGUST. -Adjust SOE only as Required.	D, II = 4	Mission Staff, J3 Cell, OIC
HELO Degradation	C, II = 3	-Use only 1 Helicopter Per Day.	D, II = 4	Military Leadership Present

Probability	A: Event has occurred frequently. B: Likely to occur immediately or within a short period of time. C: Event has occasionally occurred. D: Event has seldomly occurred. E: Event is unlikely to occur.
Severity	I- Catastrophic: May Cause Death, loss of asset, mission failure. II- Critical: May cause severe injury, illness, mission degradation. III- Marginal: May cause minor injury, illness, mission degradation. IV- Negligible: Minimal Threat, no impact to mission success.

Probability				
	A	B	C	D
I	1	1	2	3
II	1	2	3	4
III	2	3	4	5
IV	3	4	5	5
Risk Assessment Codes 1 – Critical 2 – Serious 3 – Moderate 4 – Minor 5 – Negligible				



MYS Element Readiness Report

 On-track

 Off-track/Recoverable
by 11MAY

 Off-track/Not
Recoverable

	MERCY	MERCY MTF	30NCR	HSC21	FP	MARFORPAC
Personnel					25 Augments 18 CRG-1	31 PAX 4 CA
Equipment		01JUN				
Supply						
Training					Min. 3 TRASUPS	

- Concerns:
 - MERCY: Nothing significant to report
 - MERCY MTF: Pending ID of ENT by Project Hope. Conf. list of providers from PACFLT Surgeon to US Embassy - 01JUN
 - 30NCR: ENG SMEE
 - HSC21: Nothing significant to report
 - FP: TRASUPS intend to conduct required training to all FP personnel prior to arrival per port
 - MARFORPAC: Pre-Deployment Training program (PTP)/Medical requirements currently underway



Indonesia CONOPS

LT Wolf



Update from MPC

- **Translation Material: Input required by 01 June 2016**
- **Translation Services: Requested through Hope World Wide (NGO)**
- **Adjusted location of 7 SMEE Engagements to USNS MERCY**
- **Fuel request for HN support Pending**
- **Request for additional HN funding initiated**
- **PREVMED locations updated**
- **ENG SMEE specifics**
- **APRI Funding**

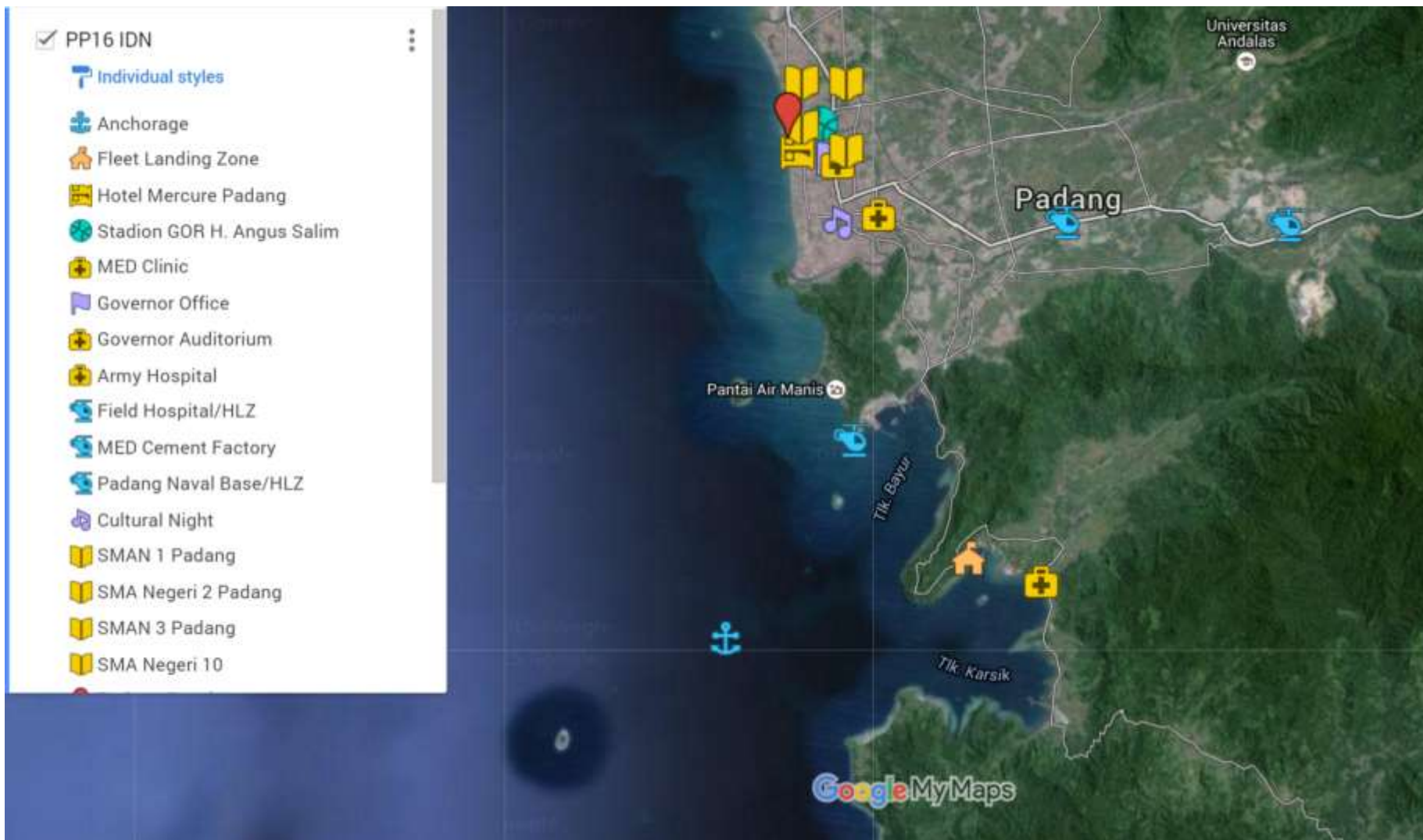


Agenda

- ***Orientation Maps***
- ***Notional Schedule***
- ***Line of Effort Overview***
- ***Proposed ENCAP/SMEE Projects***
- ***Proposed Medical SMEE/CHE Projects***
- ***HA/DR Event***
- ***COMREL***
- ***W,P,S Overview***
- ***HLZ Sites***



Areas of Interest





IDN Schedule

	FRI 19 AUG	SAT 20 AUG	SUN 21 AUG	MON 22 AUG	TUE 23 AUG	WED 24 AUG	THU 25 AUG	FRI 26 AUG	SAT 27 AUG	SUN 28 AUG	MON 29 AUG	TUE 30 AUG	WED 31 AUG
MERCY	AT ANCHOR – TELEK BUNGUS ARRIVES: 0000L / DEPARTS: 0000L												
HIGH PROFILE EVENTS	Mercy Arrive			Opening Ceremony			Reception					Closing Ceremony/ FTX	Mercy Depart
HADR		HADR Classes		HADR Classes	HADR Classes	HADR Workshop	HADR Workshop	CTX	TTX		FTX Walkthrough	FTX	
MED SMEE/CHE		SMEE/ Screenings		Screenings/ Surgery	SMEE/CHE/ Surgery	SMEE/CHE/ Surgery	SMEE/CHE /Surgery	SMEE/CHE/ Surgery	SMEE/CHE/ Surgery		WS/Surgery	WS	
ENCAP	ENCAP	ENCAP	ENCAP	ENCAP	ENCAP	ENCAP	ENCAP	ENCAP	ENCAP	ENCAP	Ribbon Cutting	Ribbon Cutting	
COMREL				Cultural Party	Sports Eng.	English Day		Beach Cleanup			English Day		
WPS								WPS Seminar			WPS Seminar		



Indonesian Lines of Effort

- HA/DR Exercise: 5 Day TNI led exercise to include multiple earthquakes, MEDEVAC, and CBRN event.
- Engineering: Engineering Engagement (ENCAP) and **Subject Matter Expert Exchanges (SMEE)**
- Medical: Community Health Engagement (CHE) and **Subject Matter Expert Exchanges (SMEE)**
- COMREL: Band engagements and community outreach
- WPS: Women, Peace and Security



Proposed ENCAPs

1. Padang Sarai Community Hall Project: Construction of a 7m by 18m shelter to be used as refuge during disaster.

- 1 hour from Port Landing Zone

2. Pasir Jambak Evacuation Road Project: Construction of 350m concrete road. Project to include excavation, grading and rolling operations.

- 1 hour from Port Landing Zone

3. Sungai Pinang Public Restroom Project: Construction of four stall public restroom for entire village. To include local style toilets, septic tank, and leach field to mitigate waste accumulation.

- 45 minutes from Port Landing Zone

Items of Interest prevalent in all sites:

2. Issues: Safety considerations as a result of extreme heat in August. Difficult keeping local population out of harms way due to curiosity.





SMEE Execution

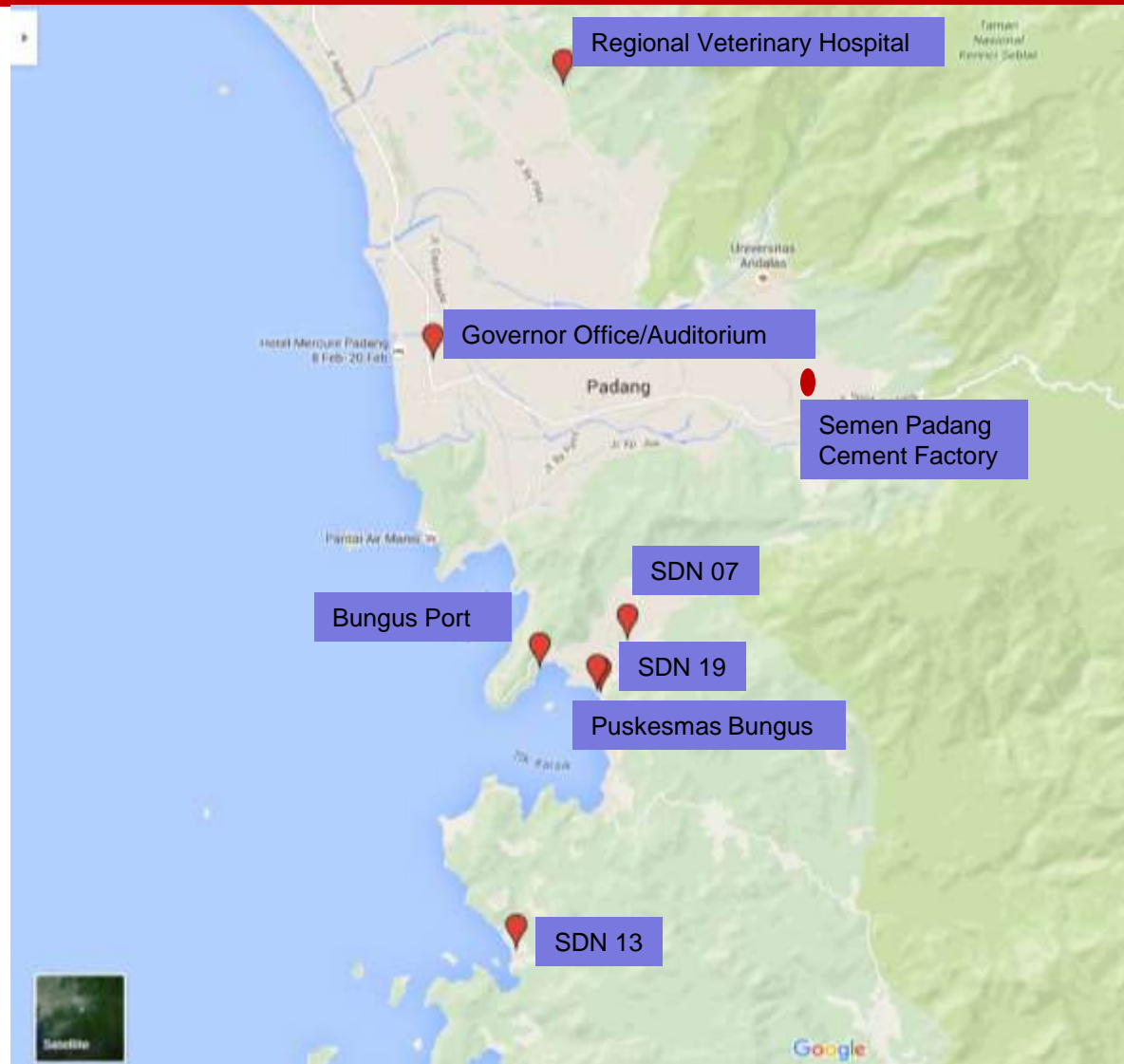
SMEE Symposium Overview

- **DESCRIPTION:** Three day symposium divided into six, 3 hour daily sessions held in in an auditorium and workshop setting. Curriculums designed to further technical knowledge base. Incorporating Japanese disaster resistant structural engineer, if available.
- **LOCATION:** Governors Auditorium
- **PAX:** Approximately 200 Host Nation participants. Approximately 4 US/PN SMEE
- **DURATION:** 23-25 August 2016
- **SCOPE OF WORK:** Designed to increase professional knowledge base of HN and U.S. engineers while improving all hazard response and HN resiliency. Intended topics include Post Disaster Management, Flood Mitigation, Disaster resistance construction practices.
- **LIFE SUPPORT:** Transportation, food/water, and translators
- **ATFP:** Location in the middle of Padang City with controlled access (guarded). Very Close proximity to police, fire, and hospitals.





Medical Sites - Indonesia



Site	Distance from Bungus Port	Travel Time (with traffic)
Governor Office/Auditorium	11.2 km	1 hr
Puskesmas Bungus Teluk Kabung (Outpatient Clinic)	2.03 km	15-30 min
SDN 19 Pasar Laban (School)	2.32 km	15-30 min
SDN 07 Kampung Pinang (School)	3.05 km	15-30 min
SDN 13 Sungai Pisang (School)	9.75 km	1 hr
Semen Padang Cement Factory	24.8 km	1-1.5 hr
Regional Veterinary Hospital	19.4 km	1-1.5 hr



Medical CHE Sites

DESCRIPTION: USNS Mercy will send a Community Health Engagement (CHE) to the site to partner with TNI and host nation medical personnel

LOCATIONS: Puskesmas Bungus Teluk Kabung, an outpatient clinic within close proximity to the proposed fleet landing location

PAX: USN team will consist of ~15 members

DURATION: 4 days

SCOPE OF WORK: Medical specialties will include nursing, primary care, optometry, and dental working directly with clinic staff and local medical staff. The medical clinic may also serve as a site to conduct surgical screenings for surgeries to be performed on the Mercy. **FDPMU SMEE moved to Governors Auditorium, no dates shifted**

LIFE SUPPORT: Transportation, food/water, translators

ATFP: location within close proximity to fleet landing





Medical Education Sites

DESCRIPTION: 3 government-owned schools (elementary and middle school) that will be visited by USNS Mercy medical and WPS staff

LOCATIONS:

- School 1 – SDN 19 Pasar Laban has 281 elementary age students
- School 2 – SDN 07 Kampung Pinang has 226 middle school age students
- School 3 – SDN 13 Sungai Pisang has 249 elementary age students

PAX: USN team will consist of 10-12 members

DURATION: 1 day per location

SCOPE OF WORK: Educational outreach teams at each school, conducting visual screenings, dental and public health/personal hygiene as well as incorporation of WPS objectives

LIFE SUPPORT: Transportation, food/water, translators

ATFP: School 3 is only accessible by small van on non-paved roads. No schools accessible by large bus.





Medical SMEE Sites

DESCRIPTION: Disaster Management Medical SMEEs

LOCATIONS: USNS MERCY

PAX: Up to 200 HN participants during prehospital and hospital phase symposiums. USNS Mercy will support SMEEs with 30 HM and medical trainers for lectures and workshops.

DURATION: 5 days

SCOPE OF WORK: Courses include triage, SAR, CBRN, BLS concepts, veterinary topics, disaster evacuation, dental victim identification, and others.

LIFE SUPPORT: Transportation, food/water, translators

ATFP: Access to ECP and USNS MERCY





Indonesia HA/DR Event

- The Tentara Nasional Indonesia (TNI) requested the HA/DR event focus on two earthquakes striking Padang West Sumatera.
- The event will be a nine day evolution:
- Day 1 - 6: HA/DR Classes (incorporated into SMEE)
- Day 7: Command Post Exercise (CPX)
- Day 8: Table Top Exercise (TTX)
- Day 9: Field Training Exercise (FTX)





COMREL Sites

Proposed Site	Proposed Use	Benefits
Padang Naval Base	Opening Ceremony	Controlled Access, On base
Bungus Port/Fleet Landing Zone	Closing Ceremony	Informal, to follow FTX
Mayor's Office	Cultural Lunch(Band)	Mil, Government Ice breaker
Padang Stadium (Stadion GOR H. Angus Salim)	Sports Day (Frisbee, Football, Tug of War) (Band)	Large Venue. Mil to Mil Engagement
Senior Highs School (SMAN 1, 2, 3, 10 Padang)	English Course (geography, story telling, focus on US)	Controlled Access. Students take specialized classes for English Lang.
Padang Beach	Beach Cleanup (Band)	Large Venue, significant interest from local community
USNS MERCY	Reception	Approximately 200 people (100 HN)
Padang Sarai Community Hall Project	Band Engagement	Ribbon Cutting Ceremony for 2 ENCAP projects



WPS in Indonesia

- **WPS Seminar “Women in Disasters” Roles and Requirements Location: Mayors Office**
 - Help encourage local government to include women in disaster preparedness into existing
- **WPS Presentation as part of Hospital SMEE “Gender Analysis in Disasters” Location: USNS MERCY**
 - Designed to facilitate the participation of women into the planning and execution of the HADR exercise and ongoing involvement in Disaster Management.
- **WPS earthquake preparedness seminar**
 - Designed to alter current drill scenarios and reinvigorate desire to prepare for disasters on a regular basis



3 Landing Zones





ORM: Risk to Force

Hazard Threat	Assess RAC	Risk Controls & Mitigation	Revised RAC	Supervision
Terrorist Action	C, I = 2	<ul style="list-style-type: none"> - FP accompany all engagements - All sites monitored prior to engagement - Conduct threat brief for personal SA 	D, I = 3	Team Leadership
Natural Disaster	D, I = 3	<ul style="list-style-type: none"> -Positive COMMS with all Teams -Limit Distance from Fleet Landing -Brief PPRs Before Visits -Monitor Weather activity 	D, II = 4	J3 Cell and Mission AG's
Car or Water Taxi Accident	C, II = 3	<ul style="list-style-type: none"> -Contracted Drivers/Operators -Use of Seat Belts and Life Jackets 	C, III = 4	Military Leadership Present

Probability	A: Event has occurred frequently. B: Likely to occur immediately or within a short period of time. C: Event has occasionally occurred. D: Event has seldomly occurred.
Severity	I- Catastrophic: May Cause Death, loss of asset, mission failure. II- Critical: May cause severe injury, illness, mission degradation. III- Marginal: May cause minor injury, illness, mission degradation. IV- Negligible: Minimal Threat, no impact to mission success.

		Probability			
		A	B	C	D
Severity	I	1	1	2	3
	II	1	2	3	4
	III	2	3	4	5
	IV	3	4	5	5
Risk Assessment Codes 1 – Critical 2 – Serious 3 – Moderate 4 – Minor 5 – Negligible					



ORM: Risk to Mission

Hazard Threat	Assess RAC	Risk Controls & Mitigation	Revised RAC	Supervision
MER TENDER Degradation	B, II = 2	<ul style="list-style-type: none"> - Minimize use of both TENDERS for morning and evening surge times - Operate below max speed - Operate in sea state 4 and below 	C, II = 3	MERCY Leadership
30 September RTHP	C, II = 3	<ul style="list-style-type: none"> - Begin retrograde NLT 29AUG - Deploy TOC only 31AUG - Depart Anchorage NLT 0900 31AUG - Execute SOE as written 	D, II = 4	Mission Staff, J3 Cell, OIC
HELO Degradation	C, II = 3	<ul style="list-style-type: none"> - Primarily use for logistics movement - Utilize as last resort MEDEVAC - One HELO operational per day 	D, II = 4	HSC 21 Det. OIC

Probability	A: Event has occurred frequently. B: Likely to occur immediately or within a short period of time. C: Event has occasionally occurred. D: Event has seldomly occurred.
Severity	I- Catastrophic: May Cause Death, loss of asset, mission failure. II- Critical: May cause severe injury, illness, mission degradation. III- Marginal: May cause minor injury, illness, mission degradation. IV- Negligible: Minimal Threat, no impact to mission success.

		Probability			
		A	B	C	D
Severity	I	1	1	2	3
	II	1	2	3	4
	III	2	3	4	5
	IV	3	4	5	5
Risk Assessment Codes 1 – Critical 2 – Serious 3 – Moderate 4 – Minor 5 – Negligible					



IDN Element Readiness Report

■ On-track

■ Off-track/Recoverable
by 11MAY

■ Off-track/Not
Recoverable

	MERCY	MERCY MTF	30NCR	HSC21	FP	MARFORPAC
Personnel					25 Augments 18 CRG-1	30 PAX 3 CA
Equipment		01JUN				
Supply						
Training					Min. 3 TRASUPS	

- Concerns:
 - MERCY: Nothing significant to report
 - MERCY MTF: Pending ID of ENT by Project Hope. Conf. list of providers PACFLT Surgeon to TNI SG via ODC – 19MAY
 - 30NCR: ENG SMEE. DSCA approval pending.
 - HSC21: Nothing significant to report
 - FP: TRASUPS intend to conduct required training to all FP personnel prior to arrival per port
 - MARFORPAC: Pre-Deployment Training program (PTP)/Medical requirements currently underway



Palau CONOPS

CDR Shirasaka, JMSDF

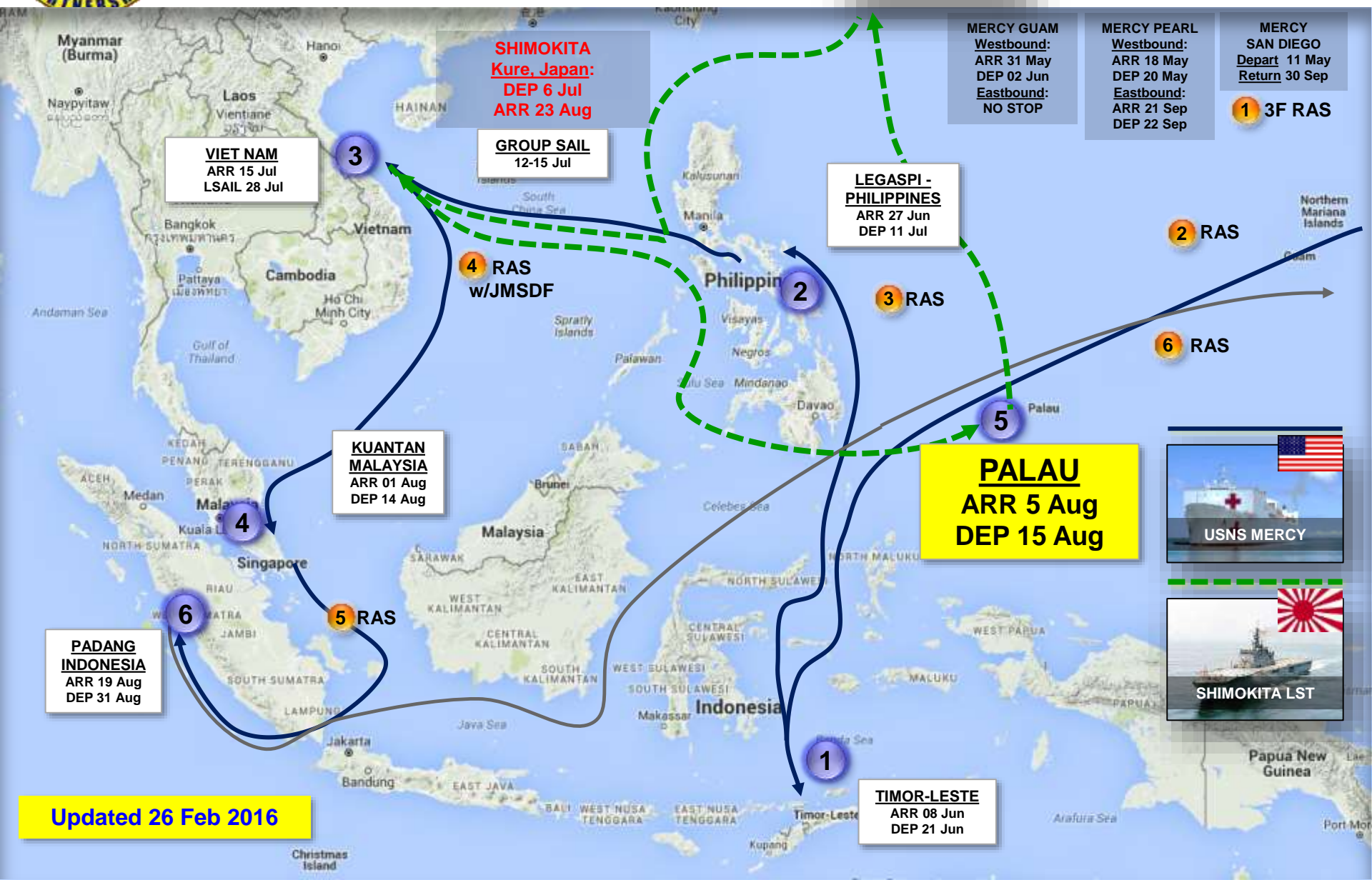


Update from MPC

- **Multilateral Engagement - Commitments**
 - ✓ **Australia (Royal Navy): 3 Medical Staff**
 - ✓ **United Kingdom (Royal Navy): 5 Medical Staff**
 - ✓ **United States (Army): 5 Medical Staff**
 - ✓ **United States (Navy): 5 Construction Engineers**
- **PDSS (18-21 April 2016) - confirmed**
 - ✓ **Task List, schedule, participants refined**
- **Engagements - refined with SMEs**
 - ✓ **Construction Projects aligned to mission**
 - ✓ **Medical Engagements refined**
 - ✓ **War Memorial Public Affairs aligned to mission**



Area of Interest



MERCY GUAM
Westbound:
ARR 31 May
DEP 02 Jun
Eastbound:
NO STOP

MERCY PEARL
Westbound:
ARR 18 May
DEP 20 May
Eastbound:
ARR 21 Sep
DEP 22 Sep

MERCY
SAN DIEGO
Depart 11 May
Return 30 Sep

1 3F RAS

2 RAS

3 RAS

6 RAS

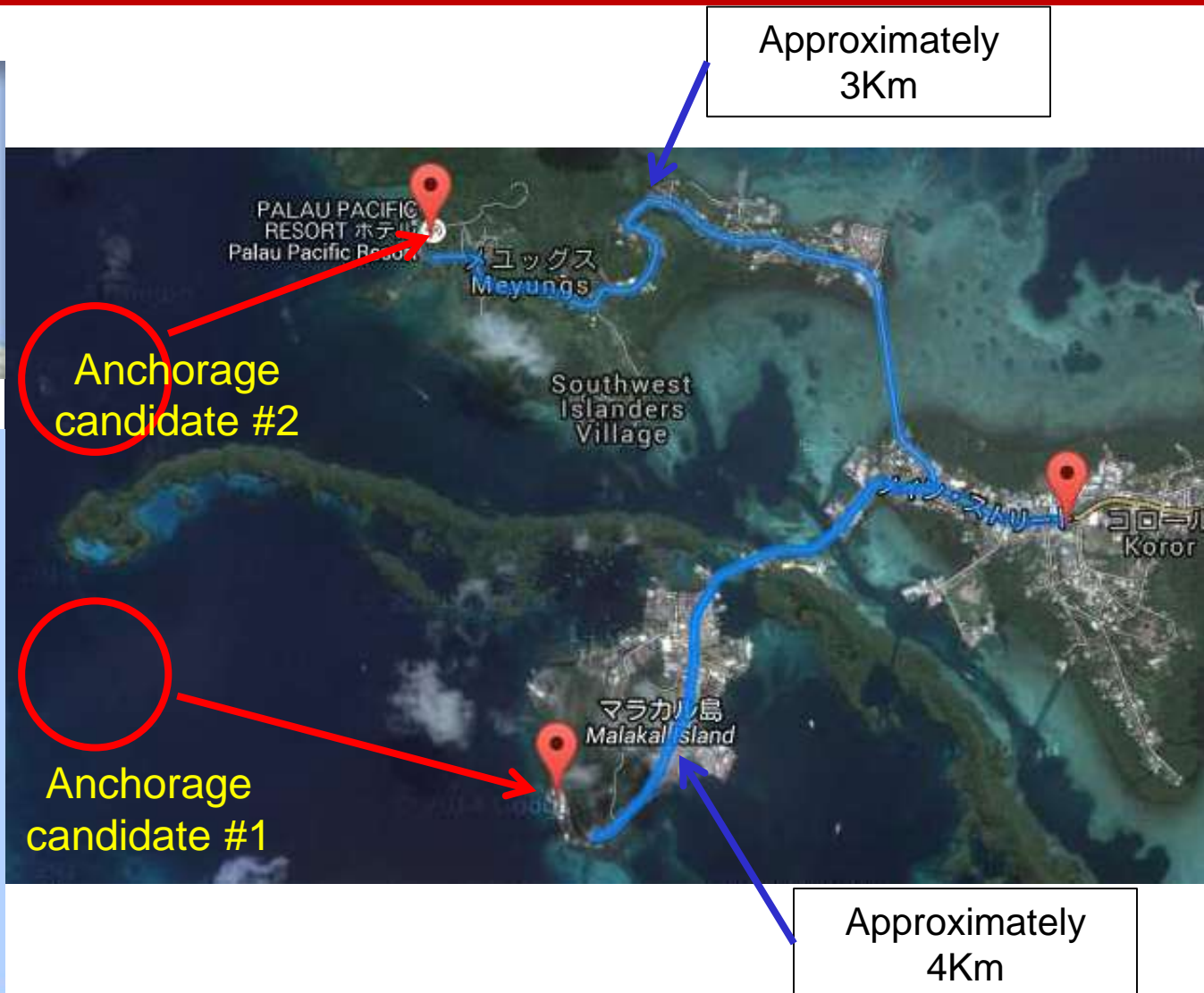
PALAU
ARR 5 Aug
DEP 15 Aug



Updated 26 Feb 2016

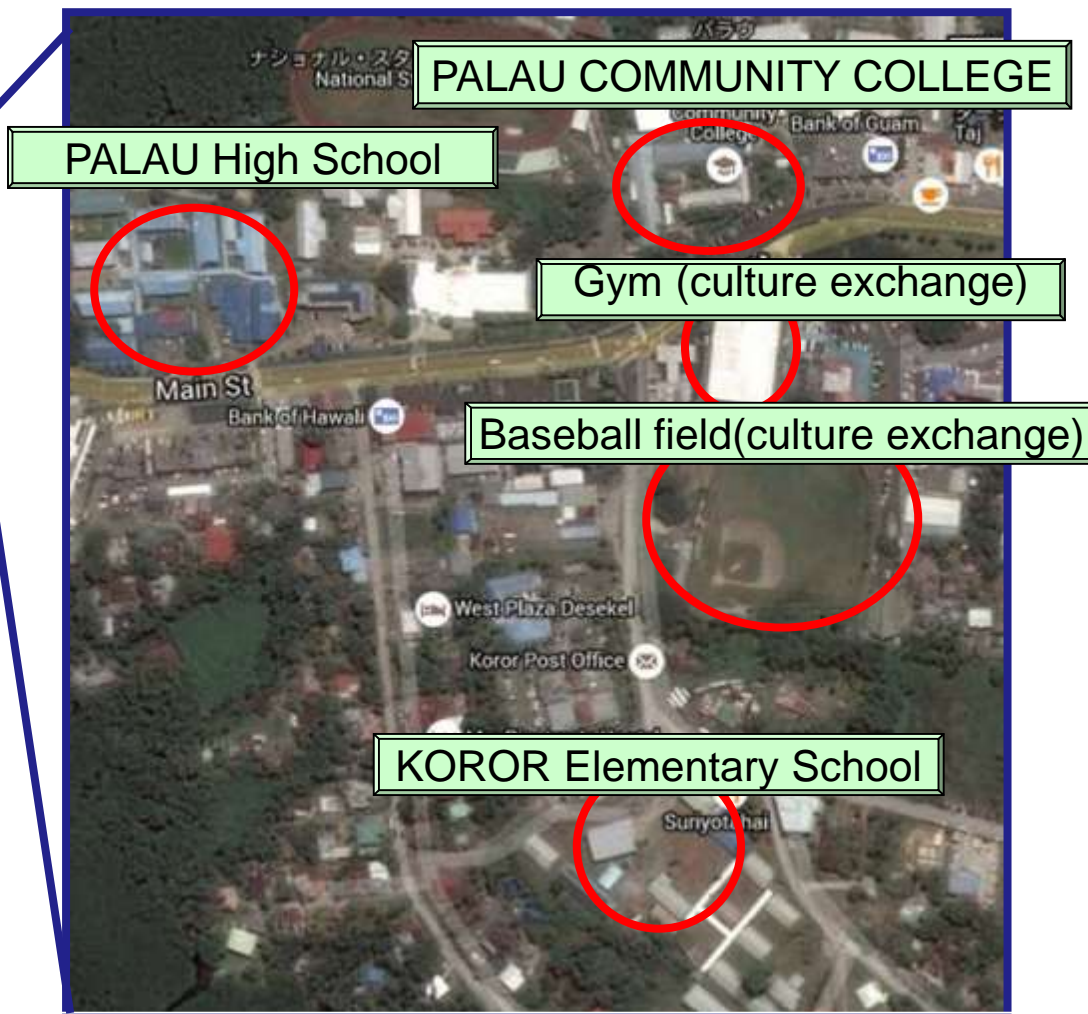
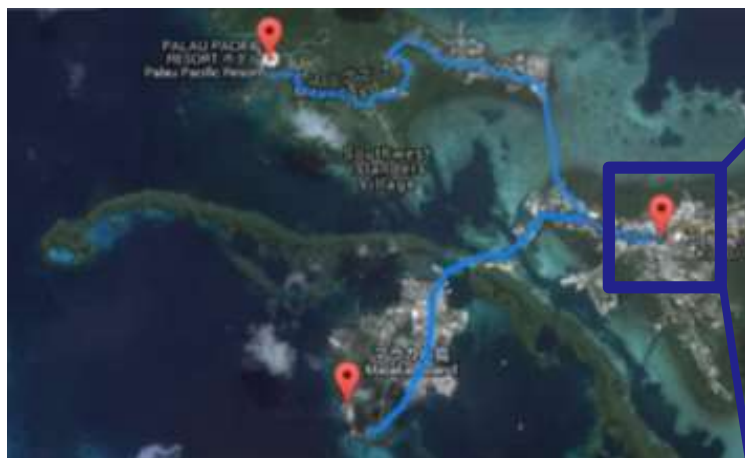


Area Orientation (Anchorage)





Area Orientation (Koror)



All site within the range of 1Km

PACIFIC PARTNERSHIP 2016



Area Orientation (Palau)





Lines of Effort

➤ **Medical**

- **Belau National Hospital**
- **Palau Community College**
- **Vision Van (Mobile Optometry Clinic)**
- **Peleliu Island School**

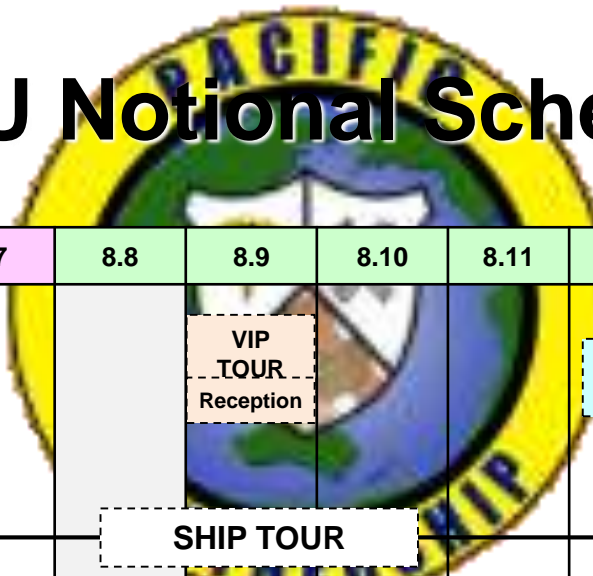
➤ **Engineering/Construction**

- **Koror Elementary School (Paint)**
- **Palau High School (Water Tank)**

➤ **Community Relations**

- **Peace Memorial Park & 81st Infantry Div. “Wild Cat” Memorial**
- **Cultural & Sports Exchanges**
- **Volunteering at Koror and Peleliu**

PALAU Notional Schedule



	7.29~	8.4	8.5	8.6	8.7	8.8	8.9	8.10	8.11	8.12	8.13	8.14	8.15	8.16
LST		Arr. Port Procedure	Courtesy Call				VIP TOUR Reception			Courtesy Call	War Memorial Event		Port Procedure Courtesy Call	
MED			SET UP Site Prep.	MEDICAL			MEDICAL			Medical	Break down			
ENG														
COMREL														

SHIP TOUR

DENTAL

Medical (Dental)
@Peleliu

KOROR Elementary School: Paint

KOROR Elementary School: Paint Gym (Frame)

Build Water Tank Foundation (PALAU High School)

(Belau National Hospital)

Japan Cultural
Exchange (LST Crew)

Japan
Cultural
Exchange
(LSTCrew)

* Draft plan and detail is set with PALAU Gov.

PACIFIC PARTNERSHIP 2016

KOROR

PELELIU

UNCLASSIFIED



ENCAP locations



ENCAP #1

Paint Facility (KOROR Elementary School)



Paint Roof (Class room)



Paint Gym(Frame)



ITEM	CONTENTS	DETAIL	
Engineering	Paint Roof (Classroom)	Works period / Man power	4-Days / 2-persons
		Paint Area	Approx. 300 m ² (16.5m x 18m)
		Material necessary (Paint)	Under coat 60 liter Finish coat 60 liter Paint thinner 15 liter
	Paint Gym (Frame)	Works period / Man power	10-Days / 6-persons
		Paint Area	6 Frames and Structure
		Material necessary (Paint)	Under coat 120 liter Finish coat 120 liter Paint thinner 30 liter
	Engineering Lease Item	Scaffolding, 2-Rolling tower, Electric tools, Generator * We need to lease from USN or Lease Company in PALAU	
	Engineering Supplies	Paint Brush, Paint Roller, Tarpaulin, Masking tool	
	Toilet	Use School Facility (OK)	
	Meal	Buy at Near shop (OK)	
	Electric Power	Use Generator or Use School Electric	

ENCAP #2

Build Water Tank Foundation (PALAU High School)



ITEM	CONTENTS	DETAIL	
Engineering	Water Tank Foundation	Work period/ M a n power	8-Days/6-Persons
		Scale	2.2m x 3.6m X 0.2m
		Materials necessary (for foundation)	- Concrete Block (28 EA) - Macadam x 1 m³ - Sand x 1.5m³ - Gravel x1.5m³ - Cement x750kg - Mesh reinforcing x3
	Engineering Supplies	Wood Board, Rafter, Nail Shovel, Scoop, Wheel Handcart, Plastic Board(For Cement), Tongs	
	Toilet	Use school facility (OK)	
	Meal	Buy at local shop (OK)	
	Electric Power	Use generator or use school electricity	



Water Tank Foundation's Image

ENCAP #3

Paint Facility (Belau National Hospital)

ITEM	CONTENTS	DETAIL	
Engineering	TBD	Works period / Man power	Days / persons
		Paint Area	Approx. m ² (m × m)
		Material necessary (Paint)	Under coat liter Finish coat liter Paint thinner liter
	Engineering Lease Item		
	Engineering Supplies	Paint Brush, Paint Roller, Tarpaulin, Masking tool	
	Toilet	Use Hospital Facility (OK)	
	Meal	Buy at Near shop (OK)	
	Electric Power	Use Hospital Electric	

Adjustment in progress



Medical Sites Koror



Medical Site Proposal

BELAU National Hospital



PALAU COMMUNITY COLLEGE



VISION-VAN(Medical Car)



Ophthalmology Check UP
: CAN check up similar in
JAPAN Hospital in the VAN
NPO

“ South Pacific Ophthalmology Cooperation
PACIFIC PA

Hospital Description

The Belau National Hospital is a modern, well-equipped, American style hospital, which is funded by the United States and located on the busy island of Koror. It is also the only hospital in Palau.

Medical Needs

Lifestyle-related illness, Orthopedist, Ophthalmology, Otolaryngology, Dental, Surgery, Pediatrics, Internal

JAPAN Readiness

- Dental, Ophthalmology(Cataract operation)
- Others will mainly Pediatrics, Internal
- Welcome US(Army), UK, Australia Medical team dispatch

*Japanese Doctor work at BELAU National Hospital

*About Ophthalmology, Conduct to use VISION-VAN

- Medical Site, BELAU National Hospital and PALAU Community College are conducted (Talk with PALAU Gov.)
- About SMEE

Doing Lifestyle-related illness and Dental guidance
(Conducted)

Medical Site Proposal

PELELIU Elementary School



PELELIU Clinic (alternative)



Peleliu Description

Peleliu Island has ONE Clinic and ONE Doctor(Fiji)
 ONLY early stage medical, Special medical will send to KOROR.
 Medicine insufficiency. Dental only 1/Quarter of the year, doctor will provide rounds during visit.
 Elementary school have Approx. 80 students.

Medical Needs

Dental, Ophthalmology, Dermatology

JAPAN Readiness

- Activity Terms : TWO Days at Elementary school
- Activity Site : USE School Library (Proposal)
- DO Dental Practice
- About SMFF



COMREL Events

- **Events:**
 - **Culture Exchange**
Origami, Cats crade
The cup and ball,
Calligraphy,
KENDO(trial)
 - **Sports event**
Softball,JUDO (practice)
 - **Volunteering(Cleanup Activities)**
 - > **koror**
 - Graveyard(JPN NAVY)
 - Gym,Baseball field
 - > **Peleiu**
 - JPN/US Memorial Monuments



Official Call (Opening/Closing)

FOR PALAU GOVERNMENT

- Official visit/Opening
 - > Date
 - 5.Aug TBD (TBD)
 - > Participants **TBD**
 - Commander,LST CO、
US,AUS,UK rep

FOR PALAU GOVERNMENT

- Official visit/Closing
 - > Date
 - 15.Aug TBD (TBD)
 - > Participants **TBD**
 - Commander,LST CO、
US,AUS,UK rep

FOR PELELIU STATE GOVERNMENT FOR PELELIU Elementary School

- Official visit
 - > Date
12.AUG TBD (TBD)
 - > Participants
 - Commander, LST CO
US, AUS, UK rep

FOR JPN/US embassy

- Official visit
 - > Date
5.Aug TBD (TBD)
 - > Participants TBD

Reception

- > Date
7.Aug 2016 1730 (1930) (**Adjustment in progress**)
- > HOST : TBD
- > Participants MAX 200 persons
PALAU GOVERMMMENT,
PELELIU STATE GOVERMMMENT
BELAU National Hospital,koror School etc
Guest List TBD
- > Sp eech TBD
- > Gifts (TBD)
- > Entertainment
KENDO (Exhibition) ,sake barrel etc



SHIP Tour

	0 7	0 8	0 9	1 0	1 1	1 2	1 3	1 4	1 5	1 6	1 7
D			Meeting Place Pire				Meeting Place Pire				
			MOVE (Boat)	TOUR	MOVE (Boat)			MOVE (Boat)	TOUR	MOVE (Boat)	

No	P	Date
1	30	6.Aug AM
2	30	6.Aug PM
3	30	8.Aug AM
4	30	8.Aug PM
5	30	9.Aug AM
6	30	9.Aug PM
7	30	10.Aug AM
8	30	10.Aug PM
9	30	11.Aug AM
1 0	30	11.Aug PM
1 1	30	12.Aug AM
1 2	30	12.Aug PM

- **SHIP TOUR**
- > 30persons／1Time
- > Meet Pire/Break up Pire
- > Detailed Planning SHIMOKITA

Culture Exchange Sports Event

- > Date
TBD (TBD)
- > Place
ASAHI Baseball Field, PALAU NATIONAL GYM
- > Culture Exchange
Origami, Cats crade, The cup and ball, Calligraphy,
KENDO(trial)
- > Sports Event
Softball
JUDO
- > Participants TBD
Target: Student, interest group(NO General Public People)



Sports Event

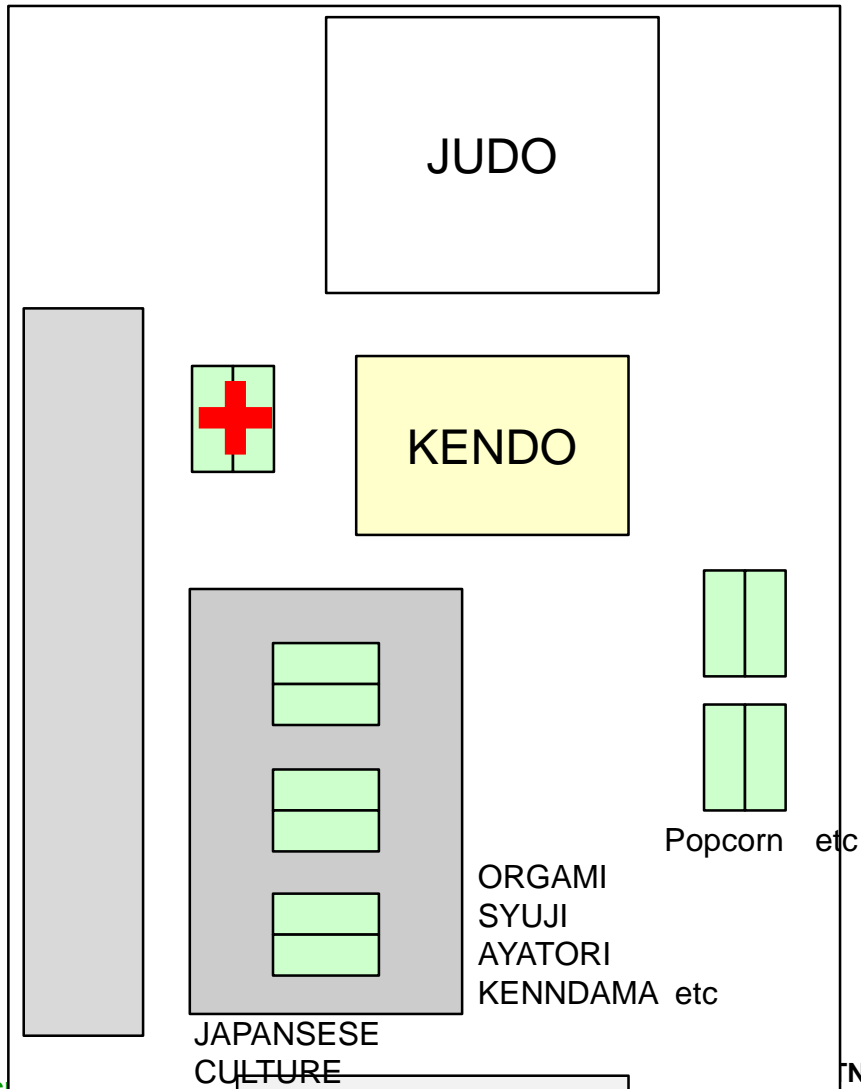
10	11	12	13	14	15	16	17	18	19	20
PALAU NATIONAL GYM										
	Move		Culture Exchange				Move			
		Preparation	JUDO (practice)			finishing				
			KENDO (trial)							
ASAHI Baseball Field						Preparation				
							Soft ball			

- > Softball
Palau team VS PP Team
- > JUDO (practice)
Practice with Local JUDO Club
- > KENDO
Exhibition
Trial



Culture Exchange Sports Event

PALAU NATIONAL GYM



Culture Exchange Sports Event

- > Date
TBD (TBD)
- > Place
Peleiu elementary School
- > Culture Exchange
Origami, Cats crade, The cup and ball, Calligraphy,
KENDO(trial)
- > Sports Event
Softball
- > Participants TBD
School Student etc



WAR MEMORIAL EVENT



Peace Memorial Park



81st INFANTRY DIVISION
"WILD CAT"

War Memorial	CONTENT	DETAIL
	Day (plan)	13.AUG (SAT)
	Participate (Plan)	JPN-US, other PP16 Attend, PALAU Gov. Approx 30 persons. (Need Adjustment)
	Movement (Plan)	LST – move – Peleliu Island WAR MEMORIAL EVENT Meal – Sightseeing –move – LST or Boats
	How to move	Use Charting High-Speed Ship 1hour Use LCAC : 45 min
	Place	100 people can make line
	Equipment	Peace Memorial Park : Use altar 81 st Infantry Div. : NONE, Need desks
	Control	Peleliu gov
	COM	Cell phone
	Electric	NO
	MEAL	GOOD
	Toilet	Public toilet near Peace Memorial Park
	Others	<ul style="list-style-type: none"> – From PMP to 81st : 8 min (using car) – PMP is clean – 81st need prep clean – Peleliu Island has five wagon buses – AUG is rainy season, off-season

WAR MEMORIAL EVENT

	07	08	09	10	11	12	13	14	15	16	17
		MOVE (boat) WITH MED TEAM	Preparation	MOVE (LCAC)	○War memorial service (JPN) ○War memorial service (US)	Launch	Sightseeing	MOVE (LCAC)		MOVE (boat) WITH MED TEAM	

> Order of the ceremony : TBD

>attendance:TBD

>Uniform: TBD





PLW Element Readiness Report

■ On-track

■ Off-track/Recoverable
by 11MAY

■ Off-track/Not
Recoverable

	SHIMOKITA (LST)	JMSDF (Navy)	JGSDF (Army)	Australia (Royal Navy)	UK (Royal Navy)	USA (Navy, Army)
Personnel		Embarked	Ashore	3 Med Staff	5 Med Staff	62 nd Med BDE Guam Seabees
Equipment		Embarked	Ashore	Carry-in	Carry-in	Carry-in
Supply						MERCY RAS + Local procure
Training						

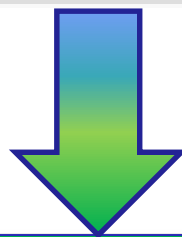
- Concerns:**

- SHIMOKITA LST: 2 Anchorage positions (TBD/PDSS)
- LCAC : OPS IN peleiu (TBD/PDSS)
- JMSDF (Navy): Medical Engagements refined, approved (PDSS)
: Medical treatment for PN in JS LST
- JGSDF (Army): Engineering/Construction Projects refined, approved (PDSS)
- AUS (RAN): -
- UK (RN): -
- US (USN, USA): Procurement of materials/assistance from CAT



Approval Recommendation

- ☐ Planning milestones complete
- ☐ Units assigned ready for tasking
- ☐ All resources confirmed



RECOMMEND APPROVAL FOR MISSION EXECUTION